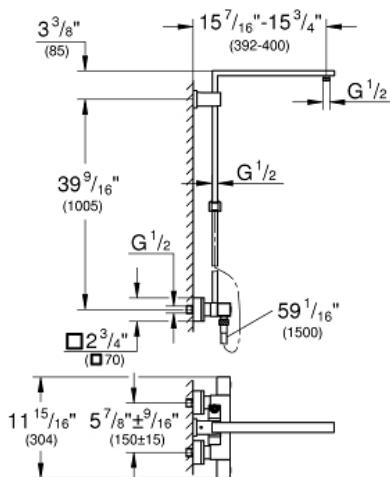


MODEL # 26420000

Pure Freude  
an Wasser



GROHE CANADA, INC. | 5900 Avebury Road, Mississauga, Ontario, Canada L5R 3M3  
Phone: 905-271-2929 | Fax: 905-271-9494 | info@grohe.ca



#### Product Description:

#### Standard Specification:

- Shower arm
- Projection 400 mm
- Exposed thermostat with Aquadimmer that diverts between hand shower and showerhead
- Showerhead and hand shower (not included)
- Bar with adjustable height hand shower holder
- Rotaflex shower hose (1500 mm) (28 417)
- **GROHE TurboStat** Compact cartridge with wax thermoelement
- **GROHE StarLight** chrome finish
- Exposed thermostatic temperature control with SafeStop at 100°F/38°C
- Inner WaterGuide for a longer life
- Twistfree to prevent hose from twisting
- Suitable for instantaneous heaters from 18 kW/h
- Minimum flow rate 7 l/min.
- Min. recommended pressure: 1.0 bar
- CALGreen compliant
- Includes adaptors for easy installation (depth adjustable)

#### Color:

- 26420000 chrome