

## Ecostat

### Pressure Balance Trim S with Diverter

Finishes : **brushed nickel** Part no. : **04447820**



## Description

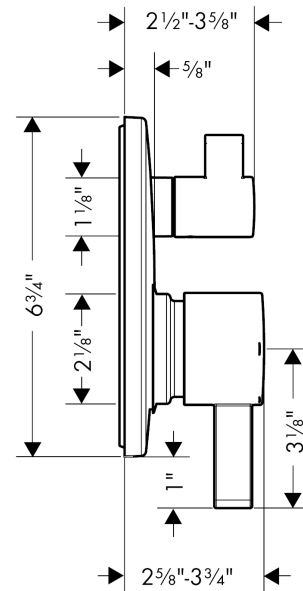
### Features

- Outlets may be operated simultaneously
- Flow: 4.5 GPM (17 L/Min)
- flow rate at 3 bar: 4.5 GPM (17 L/Min)
- Temperature and on/off control for 2 outlets

## Product image



## Scale drawing

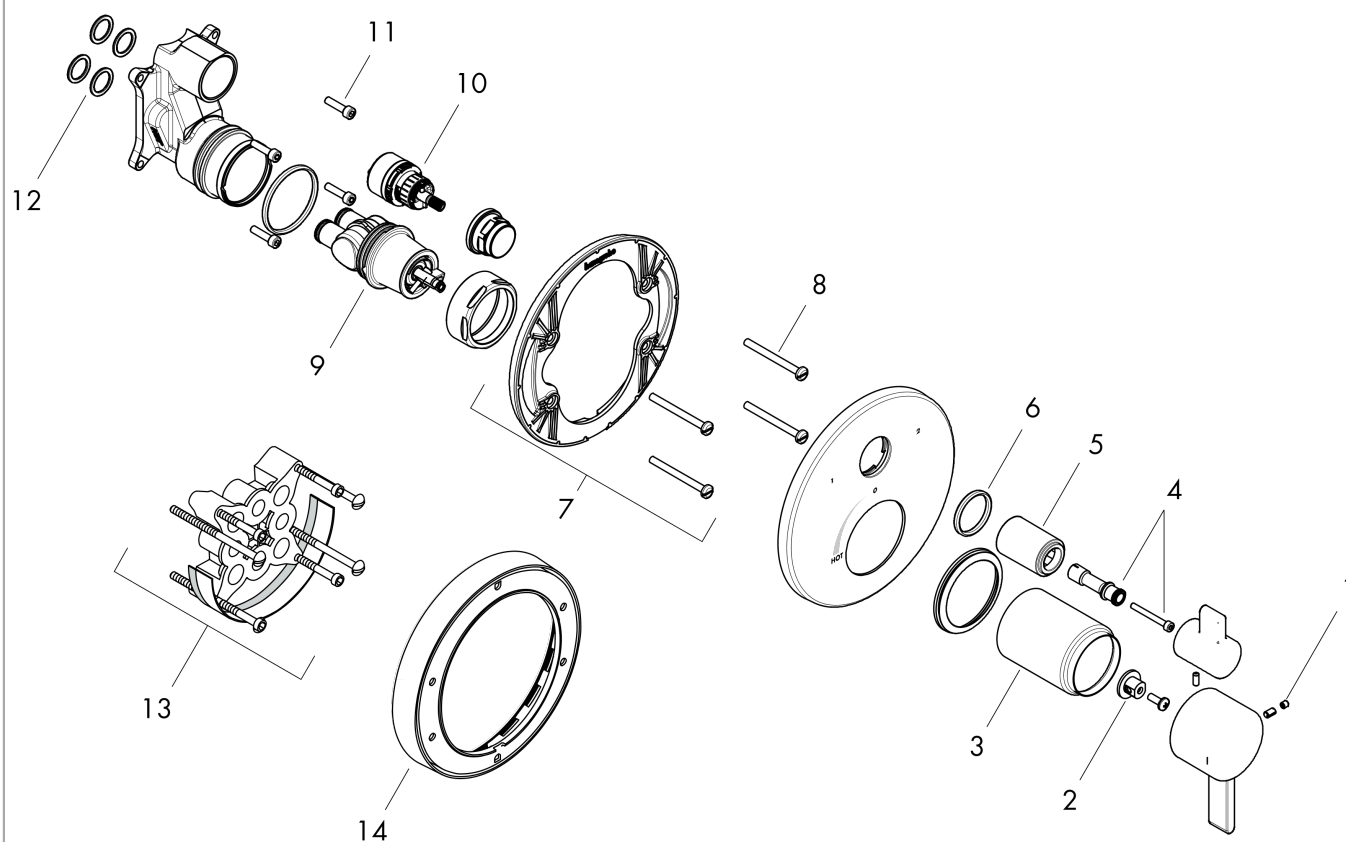


**Ecostat**  
**Pressure Balance Trim S with Diverter**  
 Finishes : **brushed nickel**    Part no. : **04447820**



## Exploded drawing

Year of production: >04/12



## Ecostat

### Pressure Balance Trim S with Diverter

Finishes : **brushed nickel** Part no. : **04447820**



## Spare parts list

Year of production: >04/12

Pos.	Description	Part no.	PC	PU
1	screw cover	95181000	0	1
2	adapter for handle	92756000	0	1
3	sleeve	88765820	0	1
4	adapter for handle	88772000	0	1
5	sleeve	95253820	0	1
6	O-ring 29x3	98371000	0	1
7	sub plate	96447000	0	1
8	set of fixing screws	96454000	0	1
9	cartridge, assy	88727000	0	1
10	shut off unit with selector	98283000	0	1
11	set of screws	96525000	0	1
12	O-ring 16x2	98133000	0	1
13	extension 25 mm	13595000	0	1
14	extension 22 mm (Ø 170 mm)	13596820	0	1
a	set of fixing screws	97747000	0	1
b	handle	88763820	0	1
c	handle for shut off unit	88767820	0	1