

# Aiiki 6636

Model number:	102787
---------------	--------

Dimensions:	66" x 36" x 24"	Installation:	Drop-in	Material:	Acrylic
-------------	-----------------	---------------	---------	-----------	---------







<b>Standard Features:</b>
<ul style="list-style-type: none"><li>• Cube inspired lines with an urban touch and comfortable design</li><li>• Comfortable inclined backrests and maximized bathing well</li><li>• Drop-in installation with end drain</li><li>• Magnetic cushion available in black or white (optional)</li><li>• Magnet backed headrest for cushion. Factory installed only if cushion ordered on</li></ul>
<b>Product characteristics:</b>
<ul style="list-style-type: none"><li>• Comfortable backrest</li><li>• Therapy System Available</li><li>• Easy Installation</li></ul>
<b>Systems:</b>
<ul style="list-style-type: none"><li>• Hydrofeel</li><li>• Aerofeel</li><li>• Combined Hydrofeel/Aerofeel</li></ul>
<b>Warranty:</b>
25 Years

## Standard colors:

	White (001)		Bone (004)		Biscuit (007)
--	-------------	---	------------	---	---------------

## Certifications

MAAX products adhere to one or more of the following certifications:

## Options (Visit our website for a complete list of our options)

No	Description
<input type="checkbox"/> OPT 10054	Two chromatherapy lights
<input type="checkbox"/> OPT 10095	Water heater assembly
<input type="checkbox"/> OPT 10117	Optional minimalist cushion (magnetic)
<input type="checkbox"/> OPT 20139	Ozonator for whirlpool system
<input type="checkbox"/> OPT 10118	ABS trim kit for whirlpool and combined systems

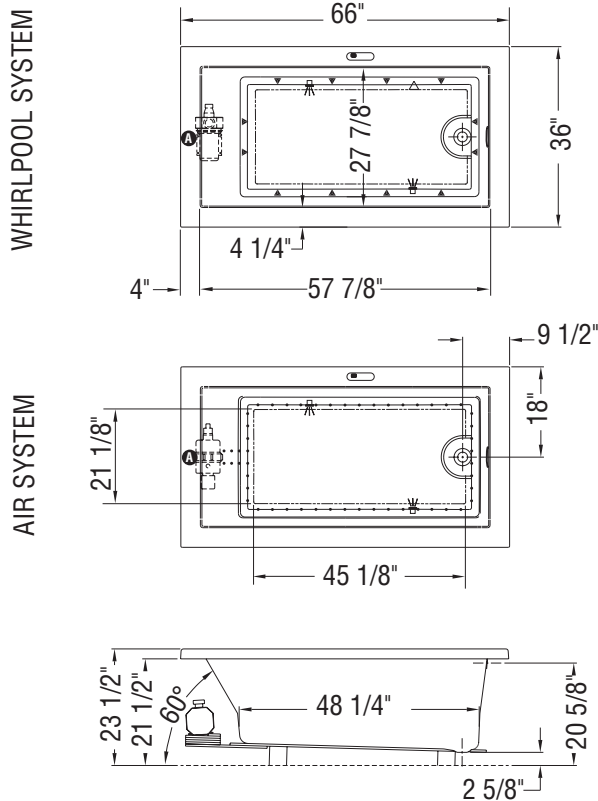
Aiiki 6636

Model number:	102787
---------------	--------

Dimensions: 66" x 36" x 24"

Installation: Drop-in

Material: Acrylic



**Note: Air backjets on same side as blower**  
( ▲ ): Indicates whirlpool jets positioning  
( △ ): Indicates suction positioning  
( ● ): Indicates airjets positioning  
( ✎ ): Indicates chromatherapy light positioning  
Bathtub base includes anti-vibration Neutra-Phone leg supports (not shown).  
**All dimensions are approximate. Structure measurements must be verified against the unit to ensure proper fit.**

ⓘ : Indicates pump or blower positioning

<b>Dimensions:</b>
66 x 36 x 23 1/2 in. (1676 x 914 x 597 mm)
<b>Water capacity:</b>
67 gallons - 305 liters
<b>Weight:</b>
67 lbs - 30.39 kg
<b>Bathing well:</b>
48 1/4 X 27 7/8 in. (1226 X 708 mm)
<b>Deep sump height:</b>
20 1/4 in. - 514 mm
<b>Deck width:</b>
4 1/4 in. - 108 mm
<b>Drain location:</b>
End

Project:	
Contractor:	
Representative:	
Date:	
Tel:	
Notes:	