

KDS 3460 AcrylX Alcove Four-Piece Shower

Model number:

145042-000-002-093

Dimensions: 59.75" x 33.5" x 80.125"

Installation: Alcove

Material: AcrylX™ Applied Acrylic



Standard Features:

- Product also available with Above-the-Floor Rough
- 4-piece shower with low threshold base
- Large top corner shelves, wide soap dish and standard acrylic handle 28
- Right seat, left seat or no seat configuration
- Unique feature: PIN system for easy front installation
- All grab bars can support up to 300 lbs

Product characteristics:

- Made in North America
- Multi-Piece Unit
- Easy Installation

Standard Colors:



White

Certifications

MAAX products adhere to one or more of the following certifications:



MAAX

KDS 3460 AcryIX Alcove Four-Piece Shower

Model number:

145042-000-002-093

Dimensions: 59.75" x 33.5" x 80.125"

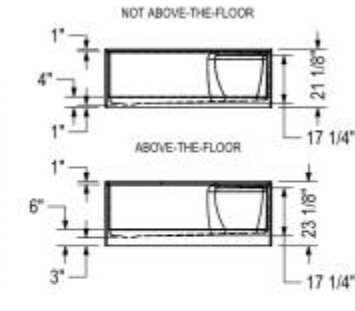
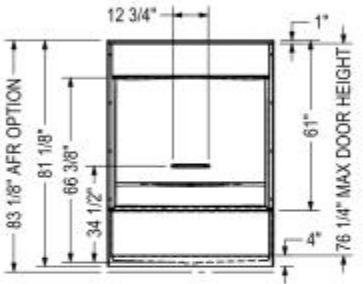
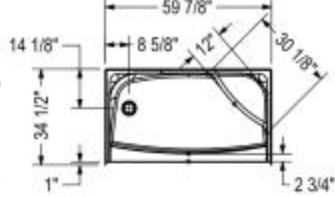
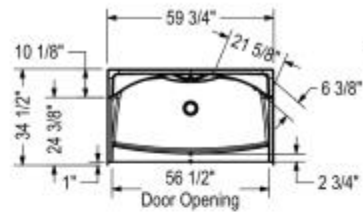
Installation: Alcove

Material: AcryIX™ Applied Acrylic

STANDARD

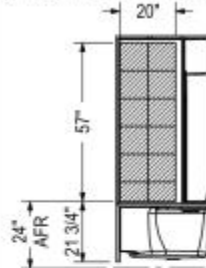
NO SEAT

RIGHT SEAT SHOWN
LEFT SEAT SYMMETRICAL

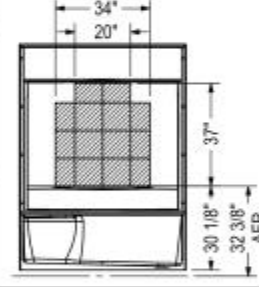


REINFORCEMENT BACKING

OPTION 20212-R RIGHT WALL SHOWN
OPTION 20212-L LEFT WALL SYMMETRICAL



OPTION 20212-B BACK WALL



Dimensions

59 3/4 x 33 1/2 x 80 1/4 In.
(1518 x 851 x 2035 mm)

Weight

155 lbs - 70 1/4 kg

Shape

Rectangular

Pieces

4

Drain location:

No seat, center drain

Left seat, right drain

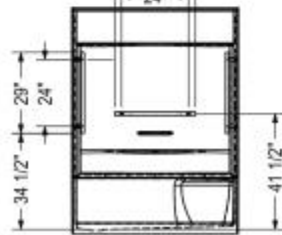
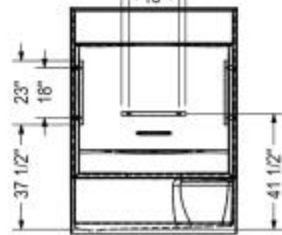
Right seat, left drain

GRAB BAR

OPTION 20203

OPTION 20204

OPTION
20203-20204



All dimensions are approximate. Structure measurements must be verified against the unit to ensure proper fit.

Project: _____

Contractor: _____

Representative: _____

Date: _____

Tel: _____

Notes: _____

MAAX