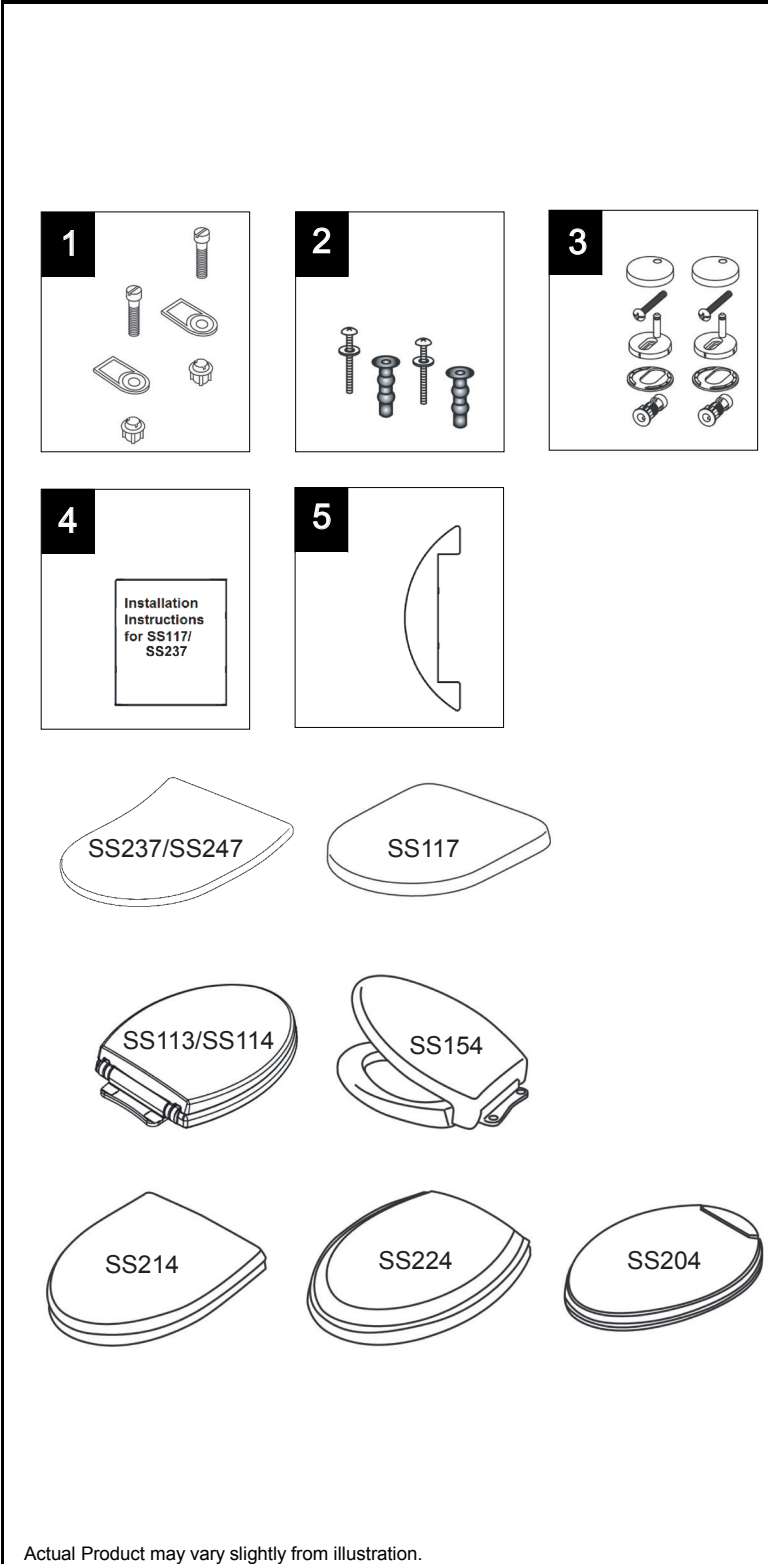


SS113, SS114, SS117, SS154, SS204, SS214, SS224, SS237 & SS247

SoftClose® Seats

SS113 SS204
 SS114 SS214
 SS117 SS224
 SS154 SS237
 SS247

Item	Part	Description
1	THU689	Under Mounting Hardware Set
2	THU651N	Top Mounting Seat Hardware
3	THU726	Mounting Hardware for SS117/SS237/SS247
4	0GU085	Installation Instructions for SS117/SS237/SS247
5	THU722#01	Back Cover Plate - Cotton for SS204
	THU722#03	Back Cover Plate - Bone for SS204
	THU722#11	Back Cover Plate - Colonial White for SS204
	THU722#12	Back Cover Plate - Sedona Beige for SS204
	THU722#51	Back Cover Plate - Ebony for SS204



Note:

THU651N is included with skirted toilets and is sold as a separate item. It is not included with seats.
 THU722 is sold for SS204 seats only.

Product Number Explanations

Seats	Seats	Colors
(SS) SoftClose® Seat	(SS) SoftClose® Seat	(#01) Cotton
(113) Round Model	(204) Elongated	(#03) Bone
(114) Elongated Model	Oval Model	(#11) Colonial White
(117) D-Shape Model	(214) Elongated	(#12) Sedona Beige
(154) Elongated Traditional Model	Sorée Model	(#51) Ebony
(237) D-Shape MH Slim	(224) Elongated	
(247) D-Shape RP	Guinevere Model	

Actual Product may vary slightly from illustration.