

**STANDARD WALL  
MUR STANDARD  
PARED ESTÁNDA**

FINISHED WALL  
MUR FINI  
PARED TERMINADA

Ø3 7/8  
[100mm]

TEMPLATE  
GABARIT  
PLANTILLA

2 to 3 1/4  
[50 mm to 82 mm]

WALL REINFORCEMENT SUPPORT  
\* SUPPORT DE BOIS MURAL  
REFUERZO DE SOPORTE DE PARED

**ACRYLIC WALL  
MUR EN ACRYLIQUE  
PARED DE ACRÍLICO**

ACRYLIC WALL  
MUR EN ACRYLIQUE  
PARED DE ACRÍLICO

BACK PLATE FOR TRIM  
PLAQUE D'ASSEMBLAGE DE LA FINITION  
PLACA PARA EL MONTAJE DE ACABADO

Ø3 1/2  
[89 mm]

TEMPLATE  
GABARIT  
PLANTILLA

INSTALLATION MALE NPT  
INSTALLATION MÂLE NPT  
INSTALACION MACHO NPT

WELDING INSTALLATION  
INSTALLATION SOUDÉE  
INSTALACION CON SOLDADURA

INSTALLATION SPEX  
INSTALACION SPEX

INSTALLATION EX  
INSTALACION EX

**Before beginning the installation:**

Read all instructions.  
Purge the water supply system before connecting it to the faucet.

**Avant de commencer l'installation:**

Lire toutes les instructions.  
Purger votre système d'alimentation d'eau avant d'effectuer le branchement au robinet.

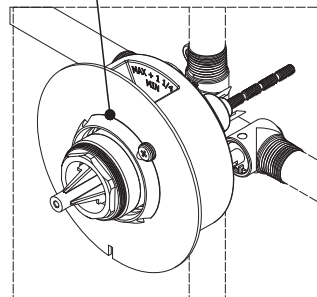
**Antes de iniciar la instalación:**

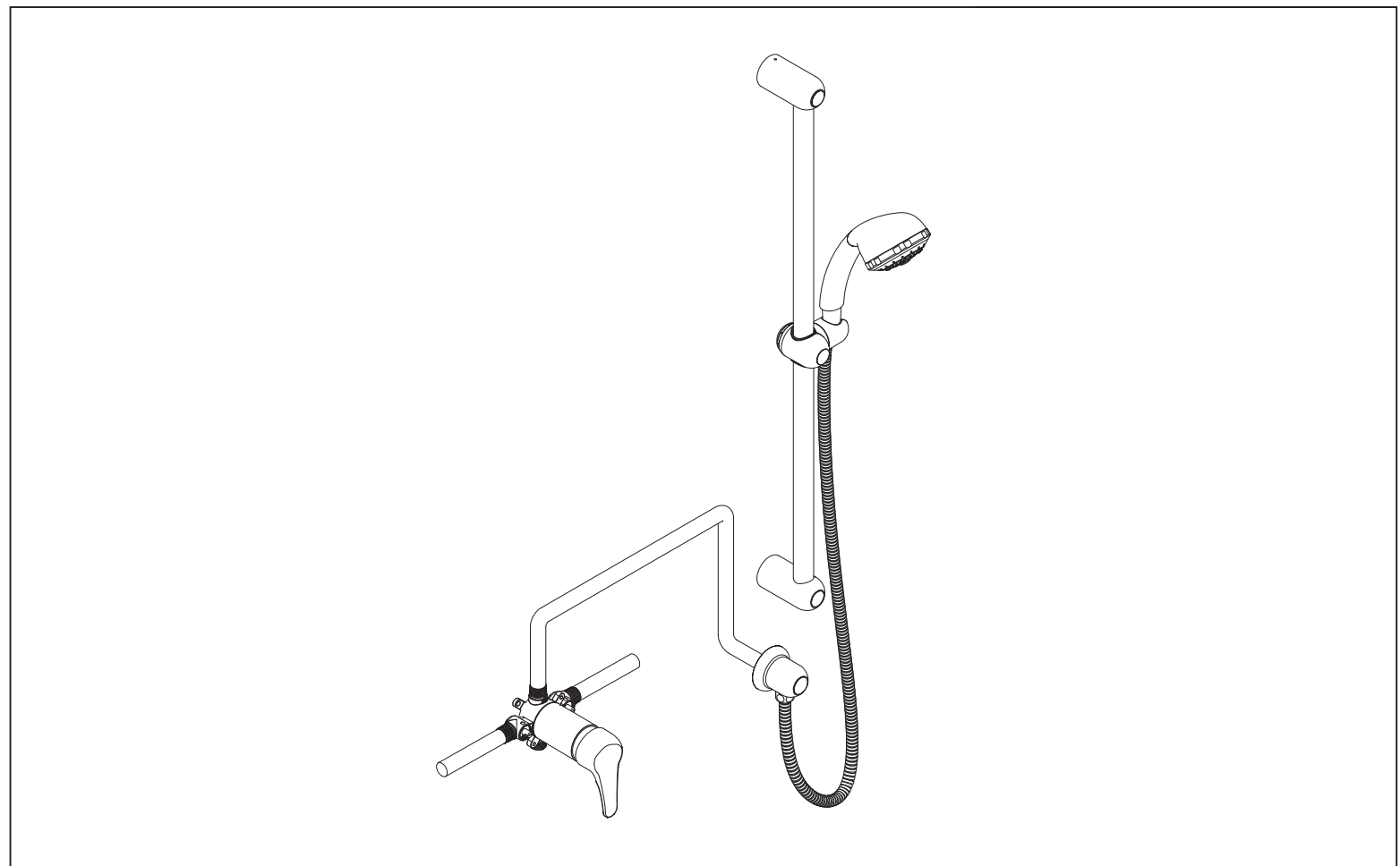
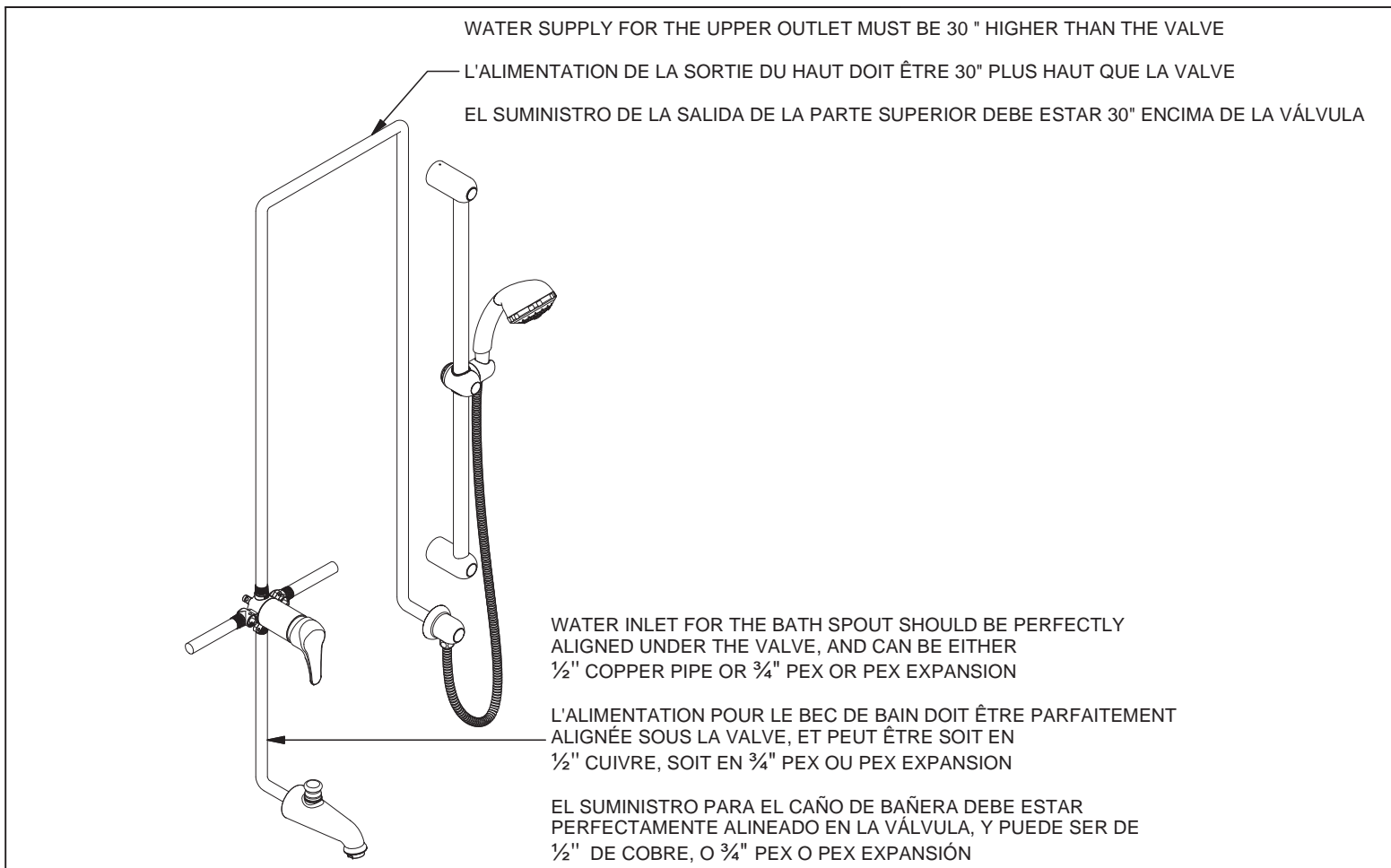
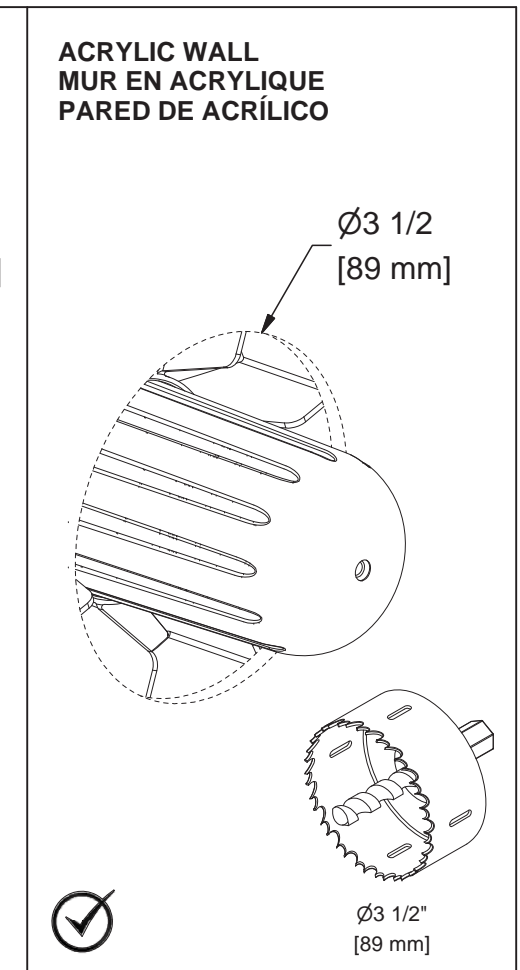
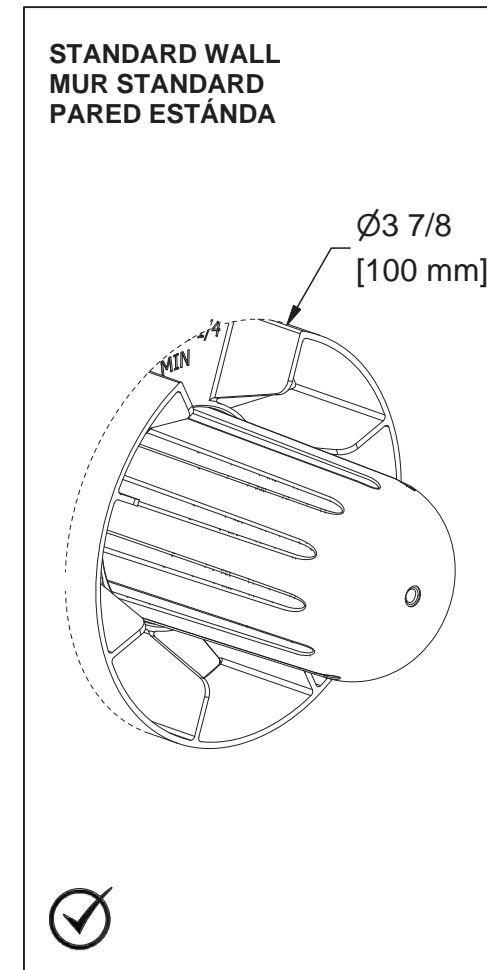
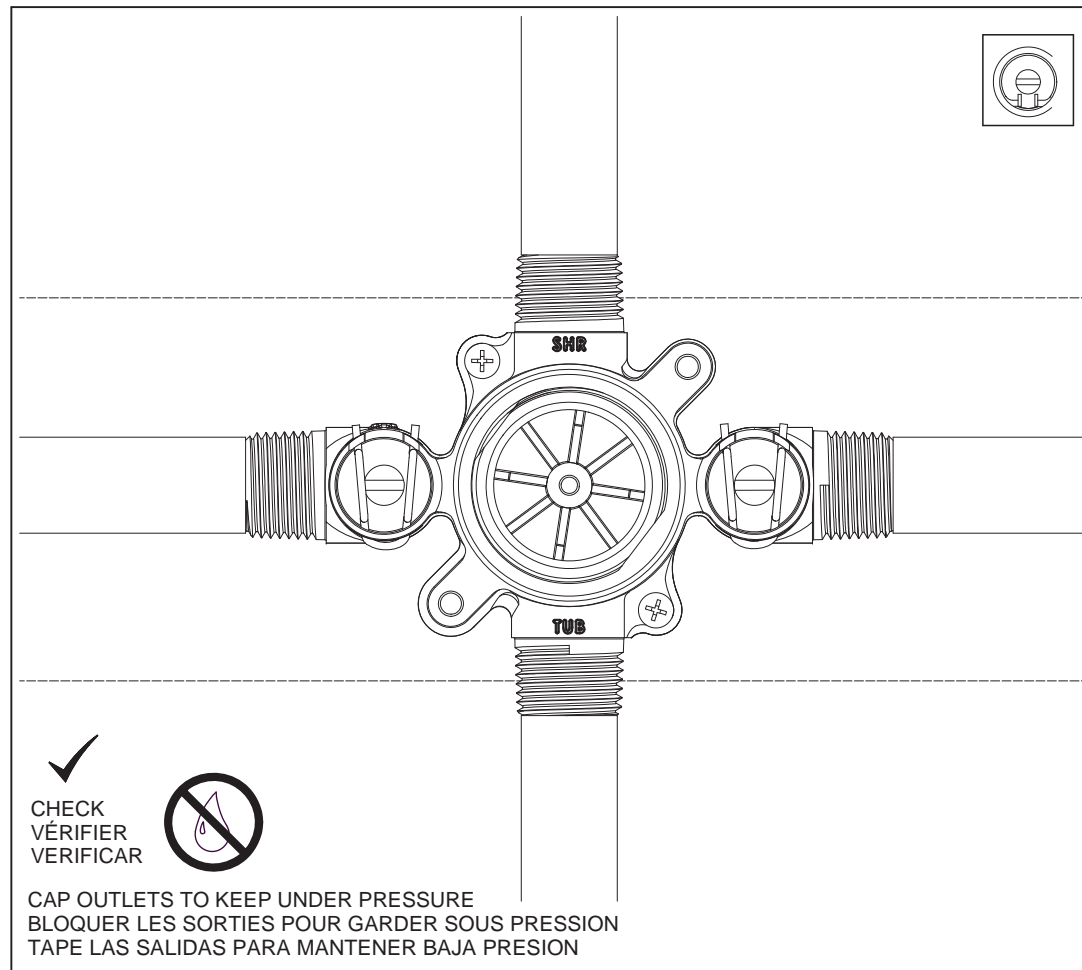
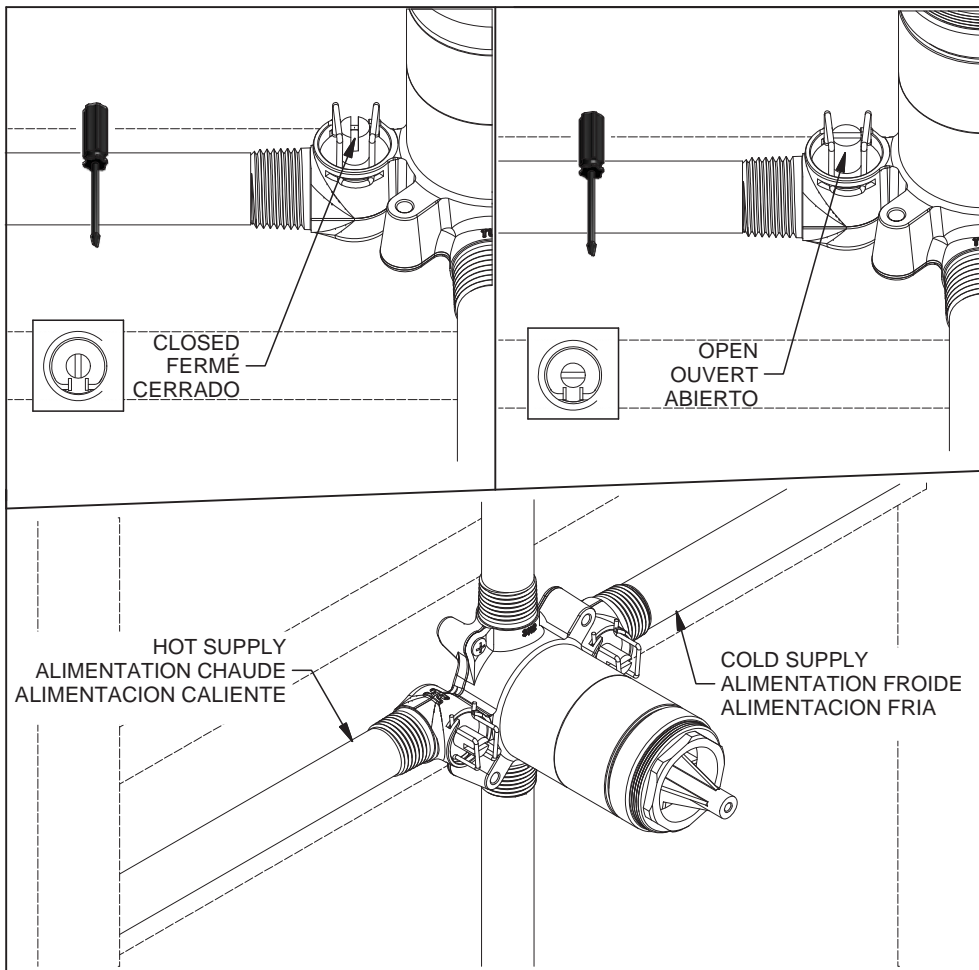
Lea todas las instrucciones.  
Es necesario purgar previamente su sistema de alimentación de agua para efectuar la conexión del grifo.

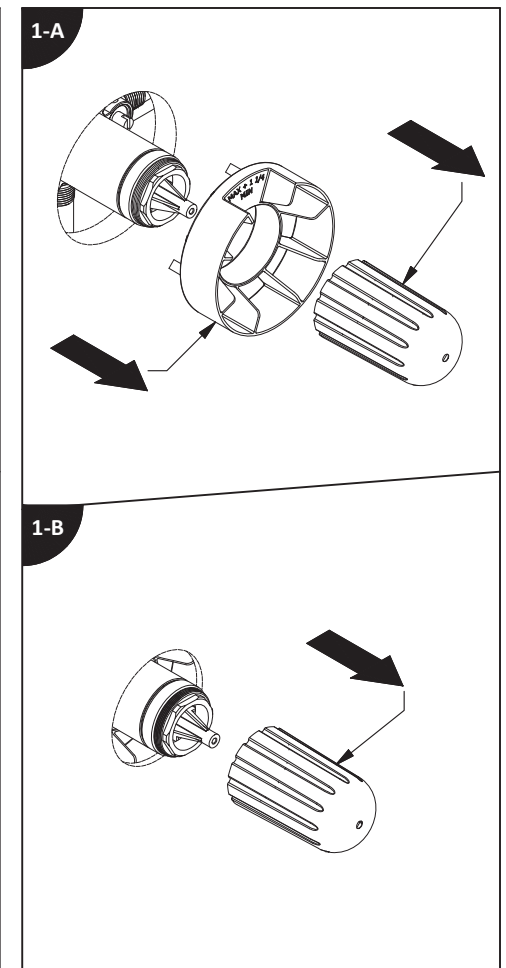
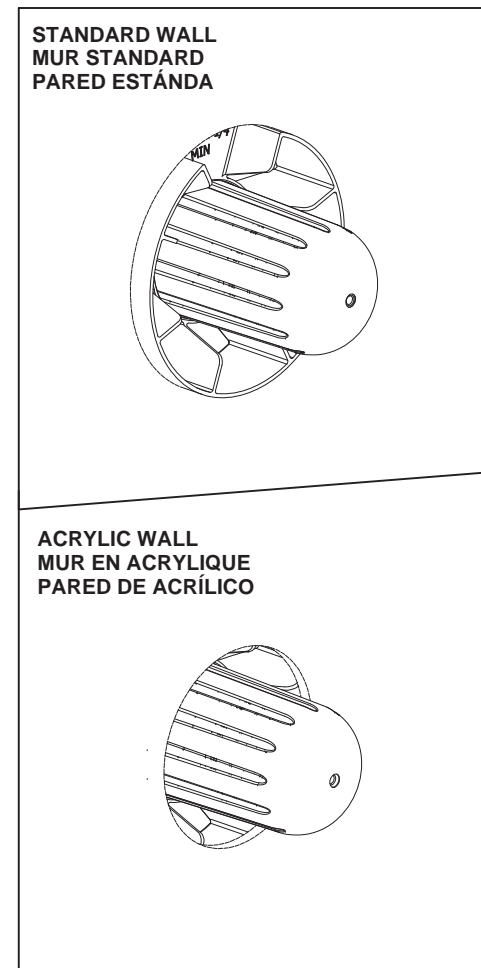
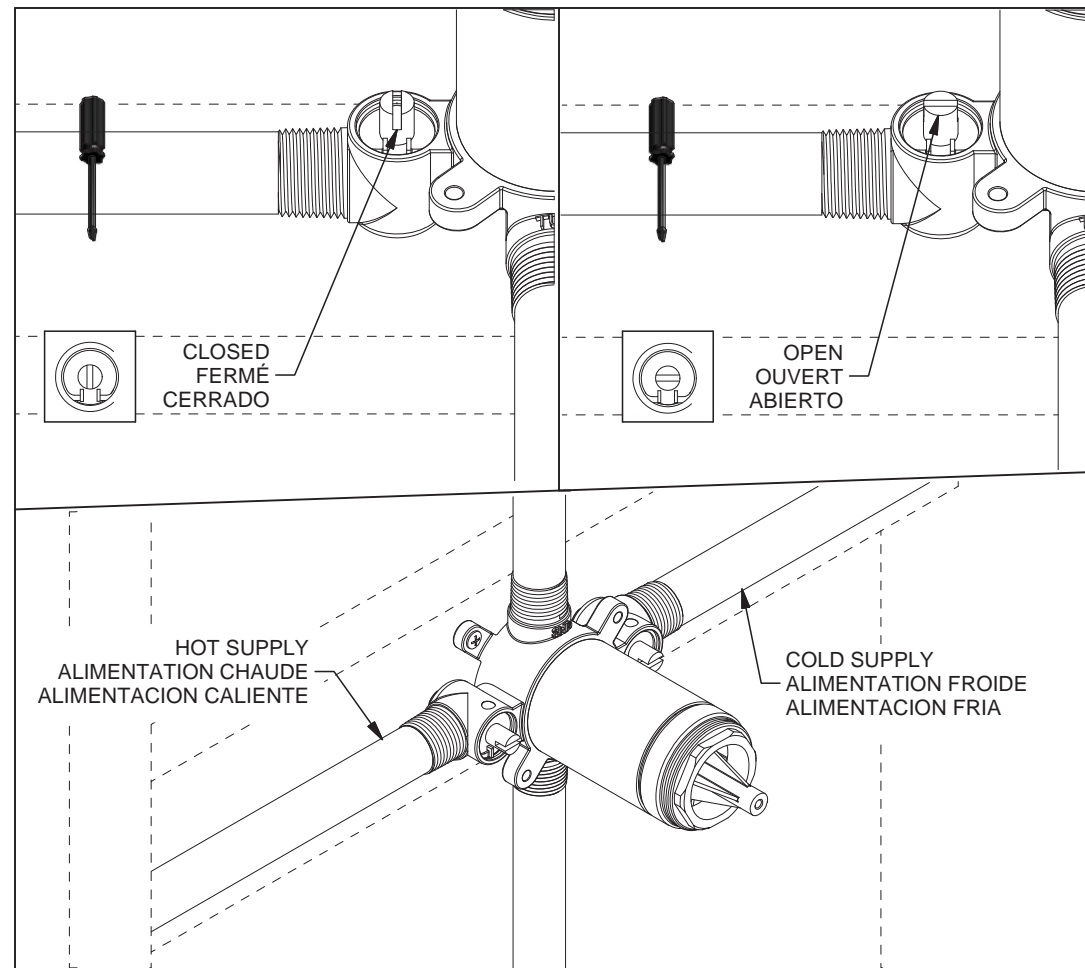
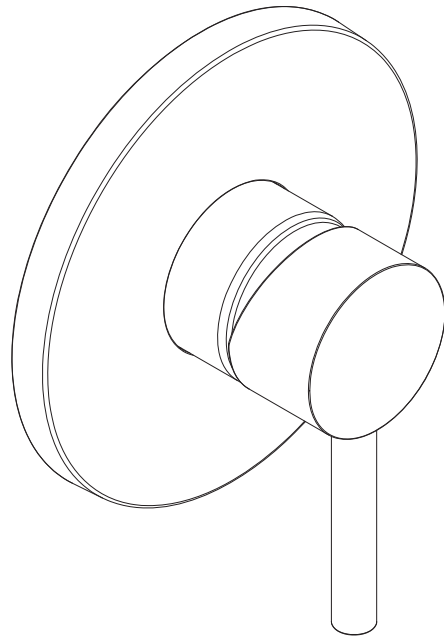
**Tools and equipment required / Outils et matériel requis / Herramientas y material requerido para instalación:**



WHITE  
BLANC  
BLANCO







**Before beginning the installation:**

Read all instructions.  
Purge the water supply system before connecting it to the faucet.

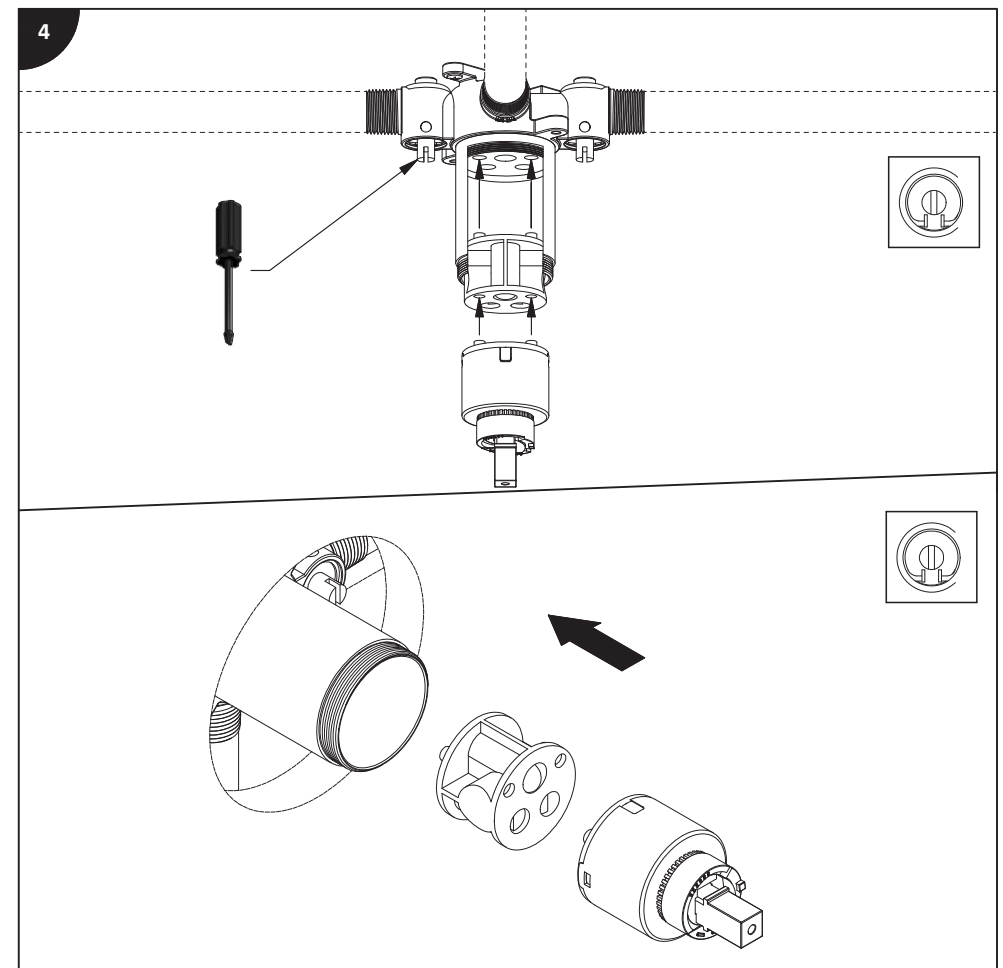
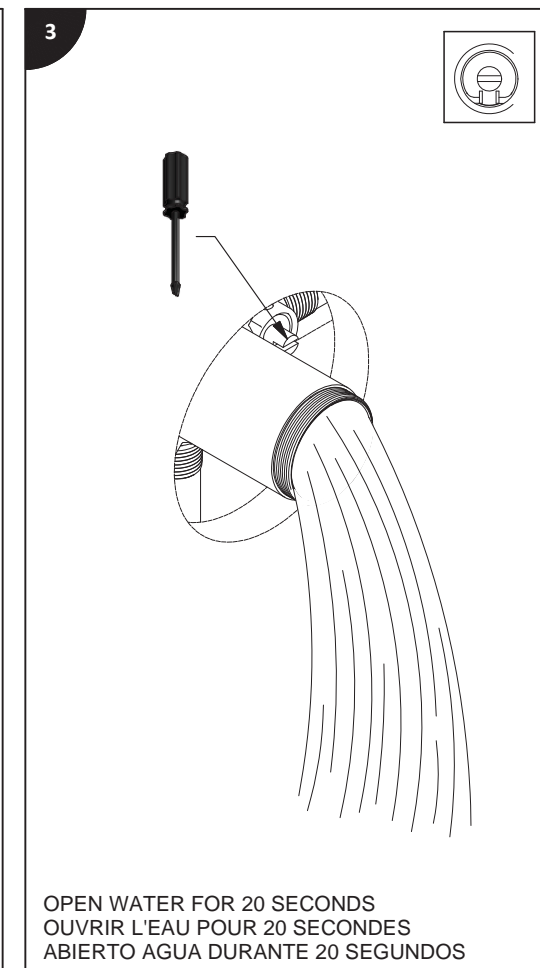
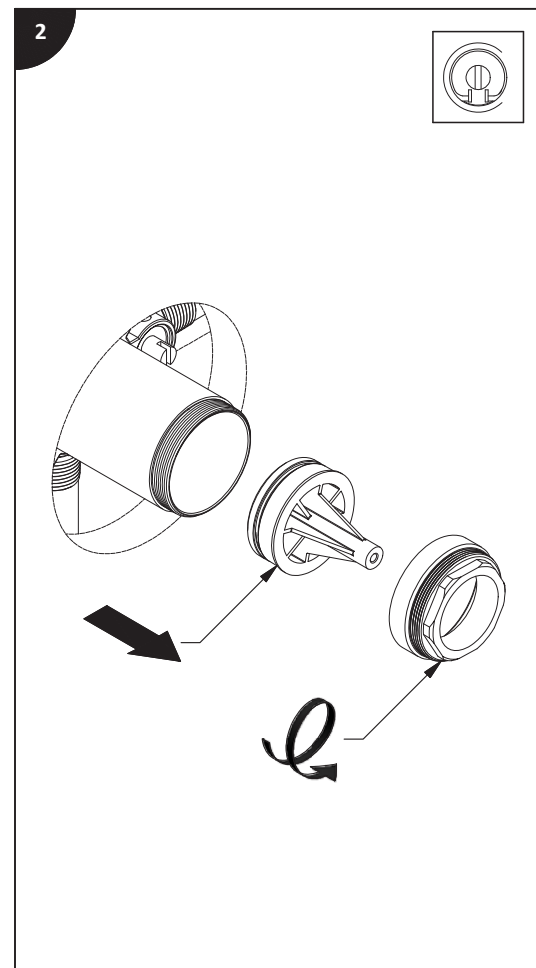
**Avant de commencer l'installation:**

Lire toutes les instructions.  
Purger votre système d'alimentation d'eau avant d'effectuer le branchement au robinet.

**Antes de iniciar la instalación:**

Lea todas las instrucciones.  
Es necesario purgar previamente su sistema de alimentación de agua para efectuar la conexión del grifo.

**Tools and equipment required / Outils et matériel requis / Herramientas y material requerido para instalación:**



5

TIGHTENING BY HAND  
SERRER À LA MAIN  
APRETAR A MANO

6

7

1/4 TURN  
1/4 DE TOUR  
GIRAR 1/4

8

DRAIN HOLE DOWN  
\* TROU D'ÉVACUATION VERS LE BAS  
ORIFICIO DE DRENAJE HACIA ABAJO

9

NOTCHED SCREW FOR ADJUSTMENT  
VIS PRÉ-COUPÉES POUR AJUSTEMENT  
TORNILLO PERFORADO PARA AJUSTAR

10

DRAIN HOLE DOWN  
\* TROU D'ÉVACUATION VERS LE BAS  
ORIFICIO DE DRENAJE HACIA ABAJO

11

12