

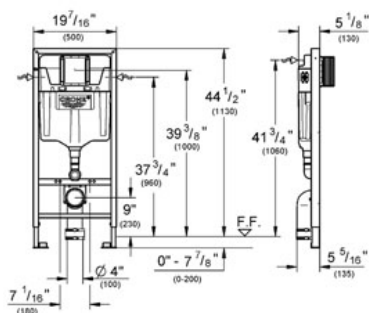
Rapid SL for Toilet

MODEL # 38749

GROHE CANADA, INC. | 5900 Avebury Road, Mississauga, Ontario, Canada L5R 3M3
Phone: 905-271-2929 | Fax: 905-271-9494 | info@grohe.ca

Pure Freude
an Wasser

GROHE



Product Description: Rapid SL for Toilet

Standard Specification:

- Flushing cistern (GD 2)
- With small maintenance access
- **44" installation height**
- For on-the-wall installations or studed walls
- Powder coated self-supporting steel frame
- For dry-cover (completely pre-assembled)
- With fixed connections
- For single or rail installation
- Quick adjustment, lockable
- Mounting material
- TÜV approved
- WC mounting screws (2x)
- Mounting kit for ceramic
- Distance of mounting screws (7" - 9")
- Diameter Ø 3 " outlet elbow
- Depth adjustable
- Transition (Ø 3 ")
- Inlet and outlet connecting set
- Flushing cistern (GD 2) 1.5 - 2.4 gpm
- Adjustment from factory (1.6 gal and .8 gal)
- Pneumatic discharge valve offering: 3 modes of operation: dual flush or start/stop or single flush
- Water supply from left, right, or back
- Low noise (group I acc. to/German Noise Specification)
- DIN approved
- Insulated against condensation
- 1/2" water supply connection, includes integrated angle valve with push-fit flexible hose union
- no tools required for the installation of the inspection shaft incl. protection during construction phase
- **Accessories sold separately for-on-the-wall installation**

Applicable Codes & Standards:

- Energy Policy Act of 1992
- ASME A112.18.1/CSA B125.1

Color:

□ 38749 001

GROHE CANADA, INC. | 5900 Avebury Road, Mississauga, Ontario, Canada L5R 3M3
Phone: 905-271-2929 | Fax: 905-271-9494 | info@grohe.ca