

**COLONY 60" x 32" INTEGRAL APRON
WHIRLPOOL AND BATHING POOL**

- ☐ **1701 129** Whirlpool Right Hand Outlet
- ☐ **1701 229** Whirlpool Left Hand Outlet (Illustrated)

Product Features:

- High Gloss Acrylic with fiberglass reinforcement
- Integral apron with removable access panel
- Integral three-sided, double tiling/water retention flange
- Dual, molded-in arm rests and elbow rests at back rest end
- Safety-textured tub bottom pattern
- Dual accessory deck area

Whirlpool featuring System I:

- 1.5 H.P. Self-Draining pump/motor with dry run seal
- 6 multi-directional jets, colour-coordinated with adjustable flow
- 1 colour-coordinated air volume control
- Anti-vortex suction fitting
- Deck mounted air switch On/Off control
- Rigid PVC piping

- ☐ **1701 102** Bath only, Right Hand Outlet
- ☐ **1701 202** Bath only, Left Hand Outlet

Actual Dimensions:

1518 x 819 x 508mm
(59-3/4" x 32-1/4" x 20")

**To Be Specified - Required:**

- ☐ Colour: (specify colour)
- ☐ Bath Faucet* (specify finish)
- ☐ Universal Drain: 1583 470 (specify finish)

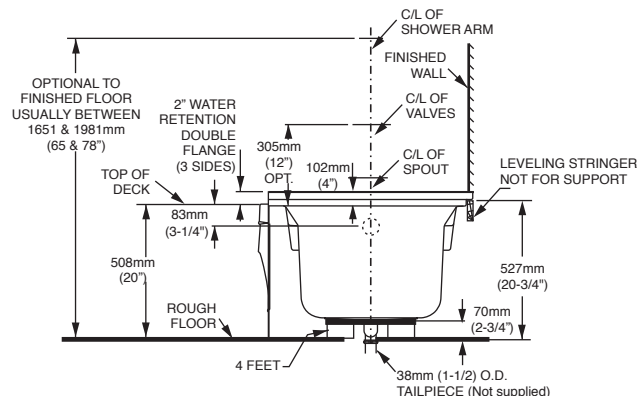
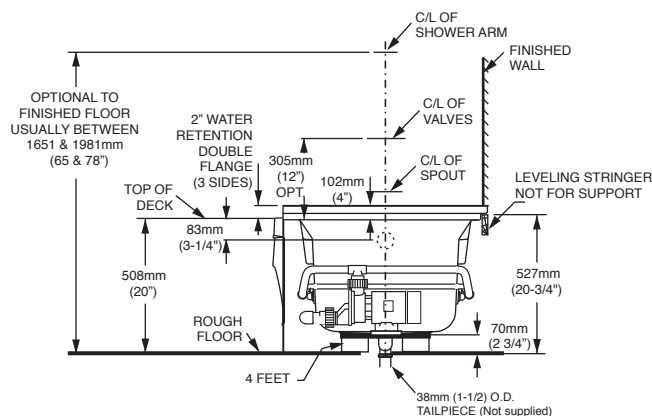
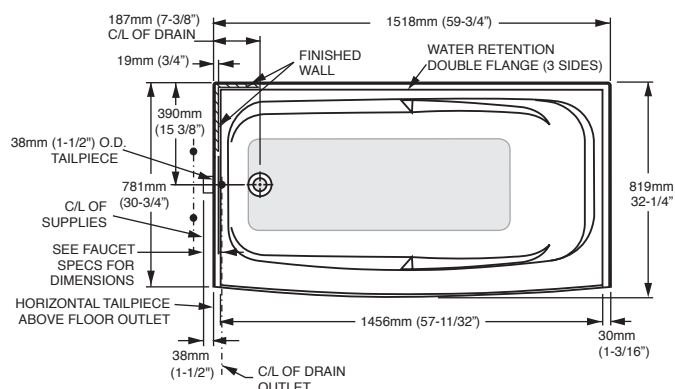
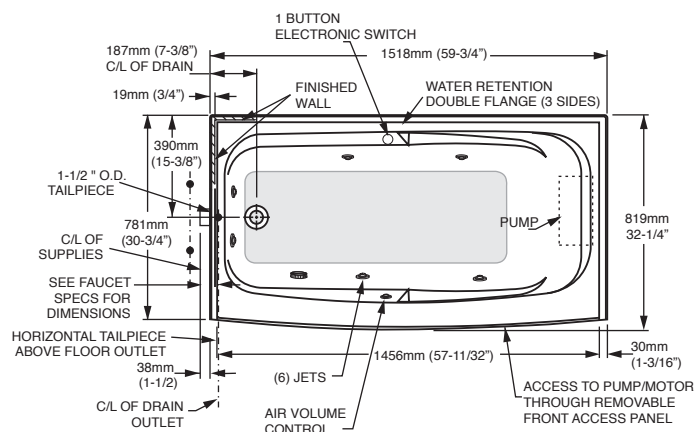
* See faucet section for models available

Compliance Certifications -**Meets or Exceeds the Following Specifications:**

- Underwriters Laboratories - Hydromassage Bathtubs UL 1795
- CAN/CSA B45 Series
- CAN/C22.2 Number 218.2-93 Hydro massage bathtub appliances
- CAN/ULC-S102 Flame Spread and Smoke Developed

NOTE: Roughing-in dimensions and product specifications shown on reverse side of page.

**COLONY™ 60" x 32" INTEGRAL APRON
WHIRLPOOL AND BATHING POOL**
HIGH GLOSS ACRYLIC



GENERAL SPECIFICATIONS FOR 1701 229 WHIRLPOOL

INSTALLED SIZE	1517 x 819 x 508 mm (59-3/4 x 32-1/4 x 20 In.)
WEIGHT	79 Lbs. (36 Kg.)
WEIGHT w/WATER	490 Lbs. (222 Kg.)
GALLONS TO OVERFLOW	41 Gal. (186 L.)
MIN. OPERATING GAL.	30 Gal. (136 L.)
BATHING WELL AT SUMP	43 x 17 In. (1092 x 432 mm)
BATHING WELL AT RIM	54-3/8 x 25-1/4 In. (1381 x 641mm)
WATER DEPTH TO OVERFLOW	12 5/8 In.(321 mm)
FLOOR LOADING	37 Lbs./Sq.Ft. (182 Kg./Sq. m)
(PROJECTED AREA)	
PTS.	16.7
CUBE (Ft ³)	33

WHIRLPOOL ELECTRICAL SPECIFICATIONS

SYSTEM 1 PUMP _____ 1.5 HP, 9.5 AMPS, 115V.

GENERAL SPECIFICATIONS FOR 1701 202 BATHING POOL

INSTALLED SIZE	1517 x 819 x 508 mm (59-3/4 x 32-1/4 x 20 In.)
WEIGHT	59 Lbs. (26.7 Kg.)
WEIGHT w/WATER	470 Lbs. (213 Kg.)
GALLONS TO OVERFLOW	41 Gal. (186 L.)
BATHING WELL AT SUMP	43 x 17 In. (1092 x 432 mm)
BATHING WELL AT RIM	54-3/8 x 25-1/4 In. (1381 x 641 mm)
WATER DEPTH TO OVERFLOW	12-5/8 In. (321 mm)
FLOOR LOADING	35.7 Lbs./Sq. Ft. (174 Kg./Sq. m)
(PROJECTED AREA)	
PTS.	16.7
CUBE (Ft ³)	33

* ALL DIMENSIONS MAY VARY $\pm 1/4"$ (6mm)

NOTES:

BATH CAN BE INSTALLED ABOVE FLOOR LINE AS A RECESS INSTALLATION.

LEFT HAND OUTLET SHOWN. RIGHT HAND REVERSE DIMENSIONS. (1701 102). SHOWN WITH DRAIN AND OVERFLOW.

REFER TO INSTALLATION INSTRUCTIONS SUPPLIED WITH FAUCET FOR ADDITIONAL INFORMATION.

FAUCETS NOT INCLUDED AND MUST BE ORDERED SEPARATELY.

PROVIDE SUITABLE REINFORCEMENT FOR ALL SUPPORTS.

CONCEALED PIPING NOT INCLUDED.

IMPORTANT:

Dimensions of fixtures are nominal and may vary within the range of tolerances established by ANSI Standard Z124.1

These measurements are subject to change or cancellation. No responsibility is assumed for use of superseded or voided leaflet.