



# YORKVILLE™ ELONGATED PRESSURE-ASSISTED TOILET 1.6 gpf / 6.0 Lpf VITREOUS CHINA

## YORKVILLE™ ELONGATED PRESSURE-ASSISTED TOILET 1.6 gpf / 6.0 Lpf

- 2876.016**
  - Vitreous china
  - **Floor-mounted, back-outlet toilet**
  - Low-consumption (1.6 gpf/6.0 Lpf)
  - EverClean® surface inhibits the growth of stain- and odor-causing bacteria, mold, and mildew on the surface
  - Elongated bowl
  - Pressure-assisted siphon jet flush action
  - Fully-glazed 2-1/8" trapway
  - 10 x 12" water surface area
  - Close-coupled Flushometer tank\*
  - Metal chrome trip lever
  - Speed Connect® tank/bowl coupling system
  - Sanitary dam on bowl
  - 4 bolt caps
  - 100% factory flush tested
- 3701.016** Elongated bowl with 4 bolt caps
- 3701.001** Same as above, Universal Bowl
- 4142.016** Flushometer tank complete with coupling components



**Nominal Dimensions:**  
752 x 516 x 742mm  
(29-3/4" x 20-1/2" x 29-1/4")

Fixture only, seat and supply by others

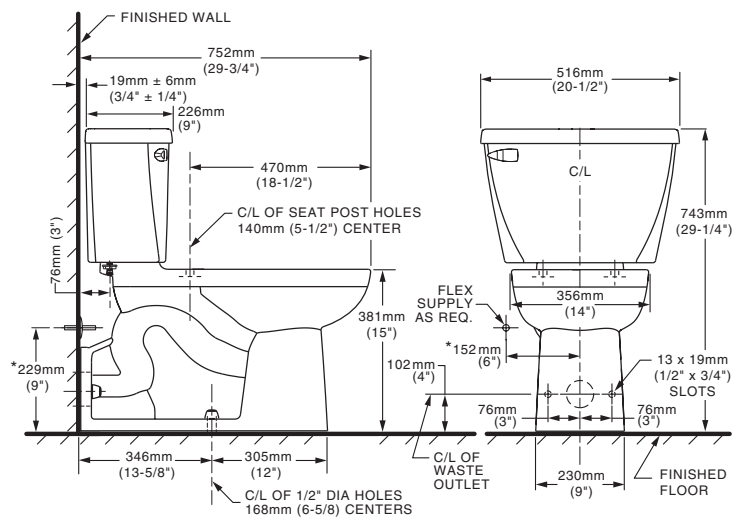
Recommended working pressure range  
25 psi - 80 psi

**Alternate Configurations Available:**

- 4142.600** Tank and tank cover only with tank cover locking device
- 4142.800** Tank and tank cover only with right hand trip lever
- 4142.900** Tank complete with right hand trip lever and tank cover locking device

**Compliance Certifications -**

**Meets or Exceeds the Following Specifications:**  
• ASME A112.19.2-2008 / CSA B45.1-08 for Vitreous China Fixtures



**NOTES:**  
WASTE OUTLET SEAL RING MUST BE NEOPRENE OR GRAPHITE-FELT (WAX RING NOT RECOMMENDED). SUPPLY NOT INCLUDED WITH FIXTURE AND MUST BE ORDERED SEPARATELY.  
DISTANCE FROM FLOOR TO CLOSET FLANGE CENTERLINE (ROUGH-IN) MUST BE 4" (102 MM) WITH FLANGE SURFACE FLUSH TO 1/16" (1.5MM) MAX. BEYOND FINISHED WALL.  
\* DIMENSION SHOWN FOR LOCATION OF SUPPLY IS SUGGESTED.  
FOR ADDITIONAL INFORMATION REFER TO INSTALLATION INSTRUCTIONS SUPPLIED.

**IMPORTANT:** Dimensions of fixtures are nominal and may vary within the range of tolerances established by ASME A112.19.2-2008 / CSH B45.1-08. These measurements are subject to change or cancellation. No responsibility is assumed for use of superseded or voided pages.

**To Be Specified:**

- Color:  White  Bone  Linen
- Seat: American Standard #5901.100.020
- Supply with Stop: