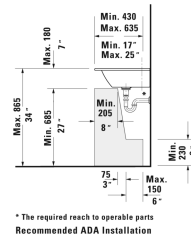
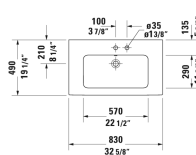
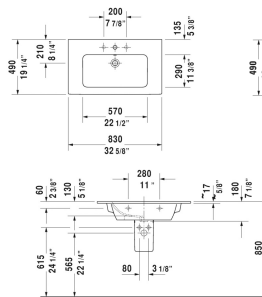
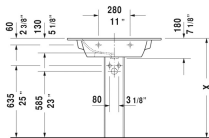
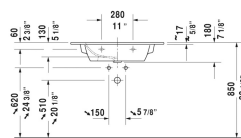



ME by Starck Furniture washbasin & # 233683..00 / 233683..30
/ 233683..58 / 233683..60 / 233683..00 / 233683..30 /
233683..58 / 233683..60

| < 32 5/8" Inch > |



* The required reach to operable parts
Recommended ADA Installation

Furniture washbasin	Dimension	Weight	Order number
with overflow, with faucet deck, hardware included, wall-mounted, cUPC® listed*, 32 5/8" Inch			
Colors			
00 White 32 White Satin Matte			
Variant			
●	32 5/8" x 19 1/4" Inch	46.7 lb	233683..00
● ● ●	32 5/8" x 19 1/4" Inch	46.7 lb	233683..30
● ●	32 5/8" x 19 1/4" Inch	46.7 lb	233683..58
⊗	32 5/8" x 19 1/4" Inch	46.7 lb	233683..60
●	32 5/8" x 19 1/4" Inch	46.7 lb	233683..00
● ● ●	32 5/8" x 19 1/4" Inch	46.7 lb	233683..30
● ●	32 5/8" x 19 1/4" Inch	46.7 lb	233683..58
⊗	32 5/8" x 19 1/4" Inch	46.7 lb	233683..60
Infobox			
* Complies with following standards: ASME A112.19.2/CSA B45.1, Washbasin is not ADA compliant in combination with pedestal, siphon cover or metal console			
Sanitary ceramics with the special WonderGliss surface finish will remain clean and attractive-looking for a long time to come. When ordering WonderGliss please add a "1" as eleventh digit to the model number.			
Space-saving siphon	1 1/4" Inch	0.9 lb	005076
Suitable products			

ME by Starck Furniture washbasin  # 233683..00 / 233683..30
/ 233683..58 / 233683..60 / 233683..00 / 233683..30 /
233683..58 / 233683..60

| < 32 5/8" Inch > |

Vanity unit wall-mounted 1 pull-out compartment, for ME by Starck # 233683, 234583, 234683, 32 1/4" x 19" Inch	32 1/4" x 19" Inch	LC6141
Vanity unit wall-mounted 2 drawers, upper drawer including cut-out for siphon and siphon cover, for ME by Starck # 233683, 32 1/4" x 19" Inch	32 1/4" x 19" Inch	LC6241
Vanity unit floorstanding 2 pull-out compartments, upper drawer including cut-out for siphon and siphon cover, for ME by Starck # 233683, 32 1/4" x 19" Inch	32 1/4" x 19" Inch	LC6626
Pedestal for # 233565, 233560, 233555, 233613, 233612, 233610, 233683, 233663, 6 7/8" x 8 1/4" Inch	6 7/8" x 8 1/4" Inch	085839
Siphon cover for # 233565, 233560, 233555, 233613, 233612, 233610, 233683, 233663, 6 3/4" x 11 3/4" Inch	6 3/4" x 11 3/4" Inch	085840
Vanity unit wall-mounted 1 pull-out compartment, for ME by Starck # 233683, 234583, 234683, 31 1/2" x 18 3/4" Inch	31 1/2" x 18 3/4" Inch	KT6419
Vanity unit wall-mounted 2 drawers, upper drawer including cut-out for siphon and siphon cover, for ME by Starck # 233683, 31 1/2" x 18 3/4" Inch	31 1/2" x 18 3/4" Inch	KT6429
Vanity unit wall-mounted 1 pull-out compartment, for ME by Starck # 233683, 32 1/4" x 18 7/8" Inch	32 1/4" x 18 7/8" Inch	BR4002
Vanity unit wall-mounted 2 drawers, upper drawer including cut-out for siphon and siphon cover, for ME by Starck # 233683, 32 1/4" x 18 7/8" Inch	32 1/4" x 18 7/8" Inch	BR4102
Vanity unit floorstanding 2 pull-out compartments, upper drawer including cut-out for siphon and siphon cover, for ME by Starck # 233683, 32 1/4" x 18 7/8" Inch	32 1/4" x 18 7/8" Inch	BR4402
Vanity unit wall-mounted 1 pull-out compartment, for ME by Starck # 233683, 234583, 234683, 31 7/8" x 18 7/8" Inch	31 7/8" x 18 7/8" Inch	XS4072
Vanity unit wall-mounted 2 drawers, upper drawer including cut-out for siphon and siphon cover, for ME by Starck # 233683, 31 7/8" x 18 7/8" Inch	31 7/8" x 18 7/8" Inch	XS4172
Vanity unit floorstanding 2 pull-out compartments, upper drawer including cut-out for siphon and siphon cover, integrated legs with height adjustment, for ME by Starck # 233683, 31 7/8" x 18 7/8" Inch	31 7/8" x 18 7/8" Inch	XS4446
Vanity unit wall-mounted 1 pull-out compartment, for ME by Starck # 233683, 234583, 234683, 31 7/8" x 18 7/8" Inch	31 7/8" x 18 7/8" Inch	XV4026
Vanity unit wall-mounted 2 drawers, upper drawer including cut-out for siphon and siphon cover, for ME by Starck # 233683, 31 7/8" x 18 7/8" Inch	31 7/8" x 18 7/8" Inch	XV4126
Vanity unit floorstanding 2 pull-out compartments, upper drawer including cut-out for siphon and siphon cover, for ME by Starck # 233683, 31 7/8" x 18 7/8" Inch	31 7/8" x 18 7/8" Inch	XV4482

All drawings contain the necessary measurements which are subject to standard tolerances. They are stated in inch & mm and are non-binding. Exact measurements, in particular for customized installation scenarios, can only be taken from the finished ceramic piece.