

# BRIZO®

## BATHROOM FAUCETS

- Litze® Collection
- Two Handle Widespread Deck Mount

### FEATURES:

- Handles attach to end valves by use of magnets inside handle. No set screw required

### STANDARD SPECIFICATIONS:

- Max flow rate 1.5 gpm @ 60 psi, 5.7 L/min @ 414 kPa
- Max flow rate (ECO models only) 1.2 gpm @ 60 psi, 4.5 L/min @ 414 kPa
- Three hole mount
- Control mechanism is a rotating cylinder ceramic cartridge with 90° rotation
- 1/4 turn handle stops
- 1/2-14 NPSM threaded inlets
- Metal drain with pop-up type fitting with plated flange and stopper
- G 1/2 threaded connection
- Solid brass fabricated end valve and spout bodies
- Spout features water efficient laminar flow
- Handles sold separately

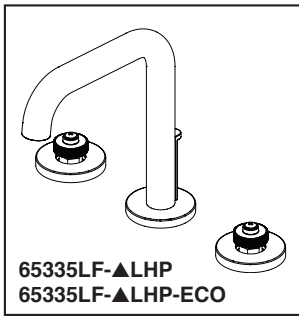
### WARRANTY

- Parts and Finish - Lifetime limited warranty; or for commercial purchasers, 10 years for multi-family residential (apartments and condominiums) and 5 years for all other commercial uses, in each case from the date of purchase.
- Electronic Parts and Batteries (if applicable) - 5 years from the date of purchase; or for commercial purchasers, 1 year from the date of purchase. No warranty is provided on batteries.



### COMPLIES WITH:

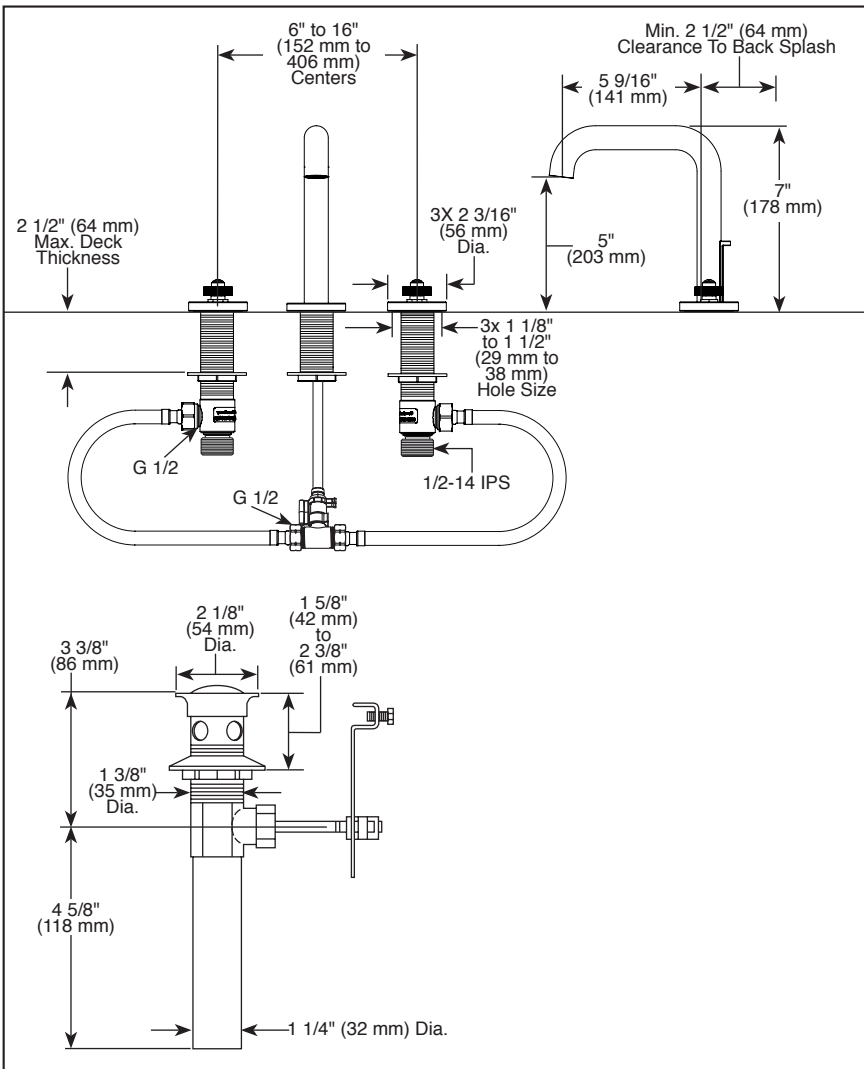
- ASME A112.18.1 / CSA B125.1
- ASME A112.18.2 / CSA B125.2
- ♿ Indicates compliance to ICC/ANSI A117.1
- EPA WaterSense®
- Verified compliant with 0.25% weighted average Pb content regulations



65335LF-▲LHP  
65335LF-▲LHP-ECO

Submitted Model No.: \_\_\_\_\_

Specific Features: \_\_\_\_\_



<p><b>HL5332-▲</b> Lever Handle</p>	<p><b>HL5335-▲</b> Extended Lever Handle</p>	<p><b>HL5333-▲</b> T-Lever Handle</p>	<p><b>HL5334-▲</b> Industrial Lever Handle</p>
---	--	---	--

▲ Designate Proper Finish Suffix

Brizo Kitchen & Bath Company reserves the right (1) to make changes in specifications and materials, and (2) to change or discontinue models, both without notice or obligation. Dimensions are for reference only. See current full-line price book or [www.brizo.com](http://www.brizo.com) for finish options and product availability.

BSP-L-65335LF-LHP Rev. D

**Brizo Kitchen & Bath Company**

55 E. 111th Street, Indianapolis, Indiana 46280  
350 South Edgeware Road, St. Thomas, ON N5P 4L1  
© 2019 Brizo Kitchen & Bath Company