



# OAK HILL™

## LAVATORY WALL MOUNT FAUCET



- Designed with external waterways and traditional two handle and spout configuration
- Can be installed as a wall mount or lavatory mount faucet
- Ceramic disc valve cartridge
- Cast brass spout
- Maximum flow rate: 1.5 gpm (5.7 L/min)
- Low flow rate: 1.2 gpm (4.5 L/min)
- Lead Free - faucet contains  $\leq 0.25\%$  total lead content by weighted volume

### CODES AND STANDARDS

Meets or Exceeds ASME A112.18.1/  
CSA B125.1/NSF 61/Section 9

Certified Compliant with 0.25% Weighted  
Average Lead Content Regulations

### AVAILABLE FINISHES

### FINISH CODE

Polished Chrome	100
Brushed Nickel	144
Platinum Nickel	150
Satin Brass*	427

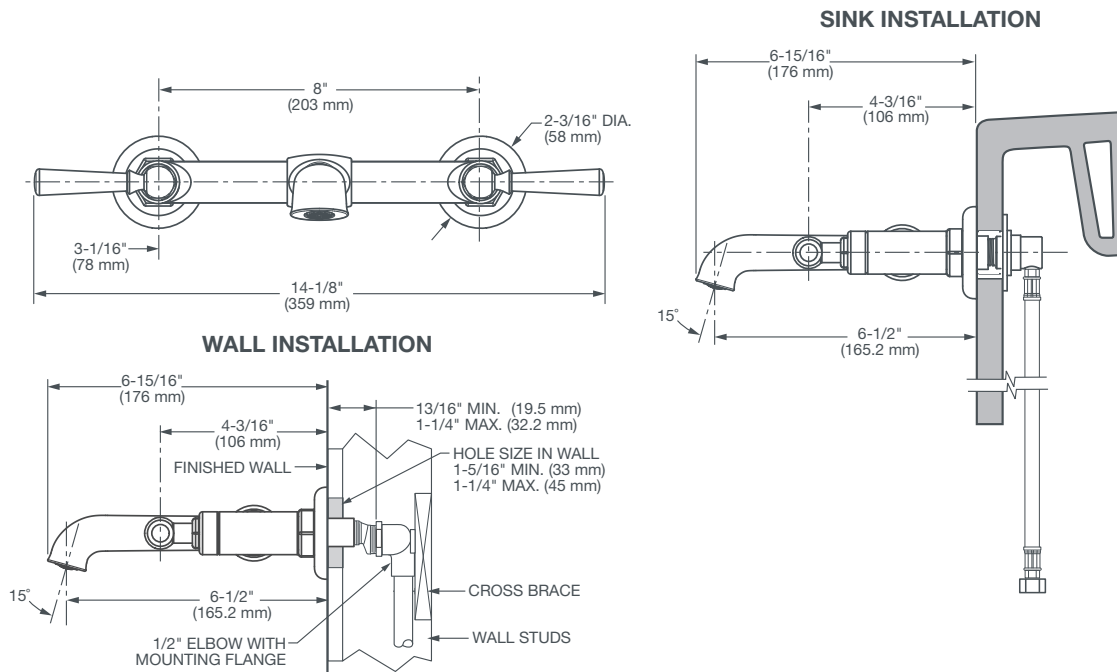
### DESCRIPTION

1.5 gpm (5.7 L/min)  
Wall Mount Faucet  
1.2 gpm (4.5 L/min)  
Wall Mount Faucet

### PRODUCT NUMBER

D35155450.XXX

D3515545C.XXX



**IMPORTANT:** These measurements are subject to change or cancellation.  
No responsibility is assumed for use of superseded or voided pages.

PART OF **LIXIL**

©2017 AS America Inc.

Revised 2/17



Meets the Americans with Disabilities Act  
Guidelines and ANSI A117.1 Requirements  
for the physically challenged.

[www.DXV.com](http://www.DXV.com)