

CADET FloWise™ ELONGATED PRESSURE-ASSISTED TOILET 1.1 gpf / 4.2 Lpf

VITREOUS CHINA

CADET FloWise™ ELONGATED PRESSURE-ASSISTED TOILET 1.1 gpf/ 4.2 Lpf

2462.100

- Vitreous china
- High Efficiency, Ultra Low-consumption (1.1 gpf/4.2 Lpf)
- EverClean® surface inhibits the growth of stain and odor-causing bacteria, mold, and mildew on the surface
- Meets EPA WaterSense® criteria
- Elongated bowl
- Pressure-assisted siphon jet flush action
- Fully-glazed 2-1/8" trapway
- 10 x 12" water surface area
- Metal chrome trip lever
- Close-coupled flushometer tank*
- Speed Connect® tank/bowl coupling system
- 2 bolt caps
- 100% factory flush tested
- 12" Rough-in

3481.100 Bowl with two bolt caps

3481.001 Same as above, Universal Bowl

4142.100 Tank complete with coupling components

Nominal Dimensions:

768 x 521 x 743mm
(30-1/4" x 20-1/2" x 29-1/4")

Fixture only, seat and supply by others

Recommended working pressure range
25 psi - 80 psi

Alternate Configurations Available:

- ❑ 4142.601 Tank and tank cover only with tank cover locking device
- ❑ 4142.801 Tank and tank cover only with right hand trip lever
- ❑ 4142.901 Tank complete with right hand trip lever and tank cover locking device

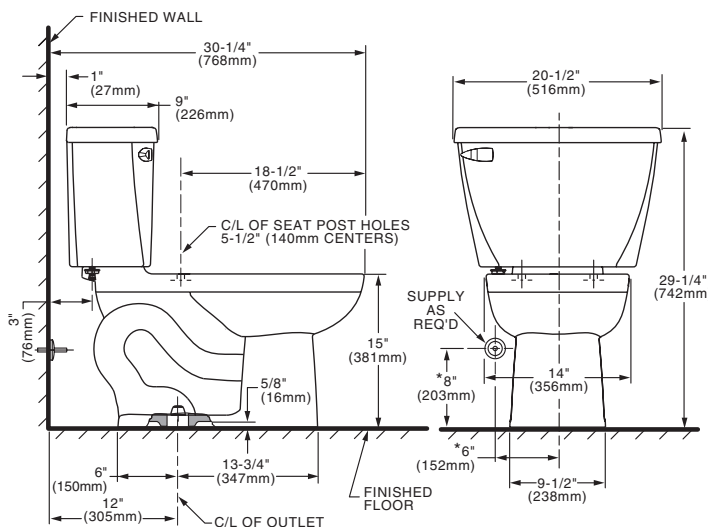
Compliance Certifications -

Meets or Exceeds the Following Specifications:

- ASME A112.19.2-2008 / CSA B45.1-08 for Vitreous China Fixtures
- US EPA WaterSense® Specification for HET's

To Be Specified:

- ❑ Color: ❑ White ❑ Bone ❑ Linen ❑ Black
- ❑ Seat: American Standard #5324.019 "Rise and Shine" (with easy to clean lift-off hinge system) solid plastic closed front seat with cover.
- ❑ American Standard #5321.110 EverClean® seat with Slow Close snap-off hinges.
- ❑ Alternate Seat:
- ❑ Supply with Stop:



NOTES:

THIS COMBINATION IS DESIGNED TO ROUGH-IN AT A MINIMUM DIMENSION OF 305MM (12") FROM FINISHED WALL TO C/L OF OUTLET. * DIMENSION SHOWN FOR LOCATION OF SUPPLY IS SUGGESTED. SUPPLY NOT INCLUDED WITH FIXTURE AND MUST BE ORDERED SEPARATELY. FOR ADDITIONAL INFORMATION REFER TO INSTALLATION INSTRUCTIONS SUPPLIED.

IMPORTANT: Dimensions of fixtures are nominal and may vary within the range of tolerances established by ASME A112.19.2-2008 / CSH B45.1-08. These measurements are subject to change or cancellation. No responsibility is assumed for use of superseded or voided pages.

