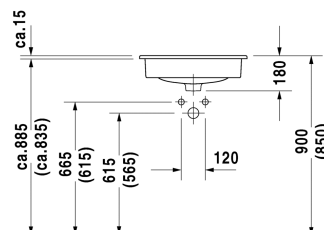
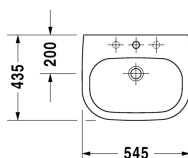


D-Code Vanity basin # 0337540000 / 0337540030

| < 545 mm > |



Vanity basin	Dimension	Weight	Order number
countertop basin, with overflow, with tap platform, 545 mm			
Colors			
00 White Alpin			
Variant			
●	545 x 435 mm	11.400 kilogram	0337540000
●●●	545 x 435 mm	11.400 kilogram	0337540030
Suitable products			
Vanity unit wall-mounted 1 pull-out compartment, countertop including one cut-out, for 1 vanity basin central, 800 x 550 mm	800 x 550 mm		KT6794
Vanity unit wall-mounted 1 pull-out compartment, countertop including one cut-out, for 1 vanity basin central, 1000 x 550 mm	1000 x 550 mm		KT6795
Vanity unit wall-mounted 1 pull-out compartment, countertop including one cut-out, for 1 vanity basin central, 1200 x 550 mm	1200 x 550 mm		KT6796
Vanity unit wall-mounted 2 pull-out compartments, 1 countertop with one cut-out or two cut-outs, for 1 or 2 vanity basin(s), 1400 x 550 mm	1400 x 550 mm		KT6797 B/L/R
Vanity unit wall-mounted 2 drawers, upper drawer including cut-out for siphon and siphon cover, countertop including one cut-out, for 1 vanity basin central, 800 x 550 mm	800 x 550 mm		KT6754
Vanity unit wall-mounted 2 drawers, upper drawer including cut-out for siphon and siphon cover, countertop including one cut-out, for 1 vanity basin central, 1000 x 550 mm	1000 x 550 mm		KT6755
Vanity unit wall-mounted 2 drawers, upper drawer including cut-out for siphon and siphon cover, countertop including one cut-out, for 1 vanity basin central, 1200 x 550 mm	1200 x 550 mm		KT6756
Vanity unit wall-mounted 4 drawers, drawer beneath basin including cut-out for siphon and siphon cover, 1 countertop with one cut-out or two cut-outs, for 1 or 2 vanity basin(s), 1400 x 550 mm	1400 x 550 mm		KT6757 B/L/R
Console including drawer for vanity basin countertop including one cut-out, 1 drawer beneath console, 1 cover beneath console, 3 console supports, 1500 x 565 mm	1500 x 565 mm		DL6891 L/R

D-Code Vanity basin # 0337540000 / 0337540030

|< 545 mm >|

Console including drawer for vanity basin countertop including one cut-out, 1 drawer beneath console, 1 cover beneath console, 3 console supports, 1800 x 565 mm	1800 x 565 mm	DL6892 L/R
Vanity unit for console 1 pull-out compartment, compartment consists of glass dividers and 2 boxes (small/large), 600 x 548 mm	600 x 548 mm	XL6719
Vanity unit for console 1 pull-out compartment, compartment consists of glass dividers and 2 boxes (small/large), 800 x 548 mm	800 x 548 mm	XL6713
Vanity unit for console 1 pull-out compartment, compartment consists of glass dividers and 2 boxes (small/large), 1000 x 548 mm	1000 x 548 mm	XL6715
Vanity unit for console 1 pull-out compartment, 620 x 547 mm	620 x 547 mm	LC6827
Vanity unit for console 1 pull-out compartment, 820 x 547 mm	820 x 547 mm	LC6828
Vanity unit for console 1 pull-out compartment, 1020 x 547 mm	1020 x 547 mm	LC6829
Console for above counter basin and countertop basin 1 console with one cut-out, Width min. see ordering information, Width max 2000 mm, price per section of 100 mm, basic price till 800 mm, 550 mm	550 mm	LC096C
Console for above counter basin and countertop basin 1 console with two cut-outs, Width min. see ordering information, Width max 2000 mm, price per section of 100 mm, basic price till 800 mm, 550 mm	550 mm	LC097C
Vanity unit wall-mounted 1 pull-out compartment, 800 x 548 mm	800 x 548 mm	XS4900
Vanity unit wall-mounted 1 pull-out compartment, 1000 x 548 mm	1000 x 548 mm	XS4901

All drawings contain the necessary measurements which are subject to standard tolerances. They are stated in mm and are non-binding. Exact measurements, in particular for customised installation scenarios, can only be taken from the finished ceramic piece.