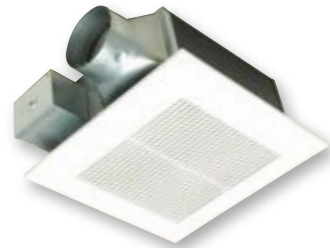


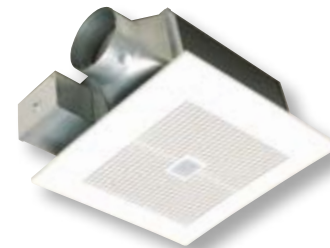
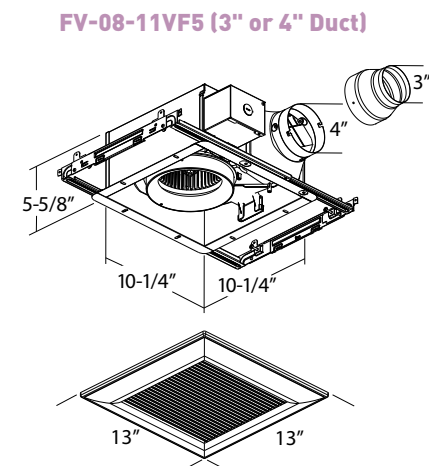
Panasonic

WhisperFit[®] EZ

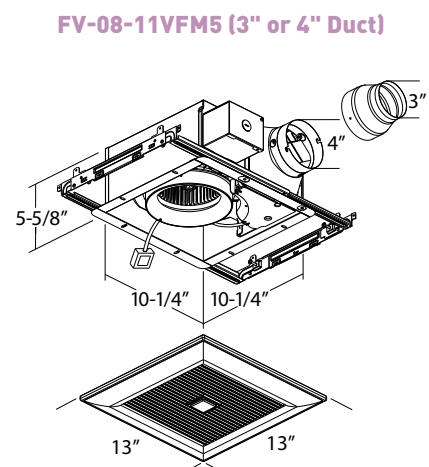
VENTILATION FAN



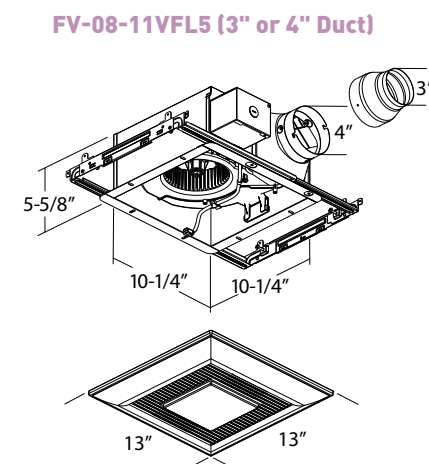
FV-08-11VF5



FV-08-11VFM5



FV-08-11VFL5
(with 3" duct adapter)



Panasonic

Panasonic Canada Inc.

5770 Ambler Drive, Mississauga, ON L4W 2T3

Phone (800) 669-5165 Fax (905) 238-2414

Email: ventilationfans@ca.panasonic.com

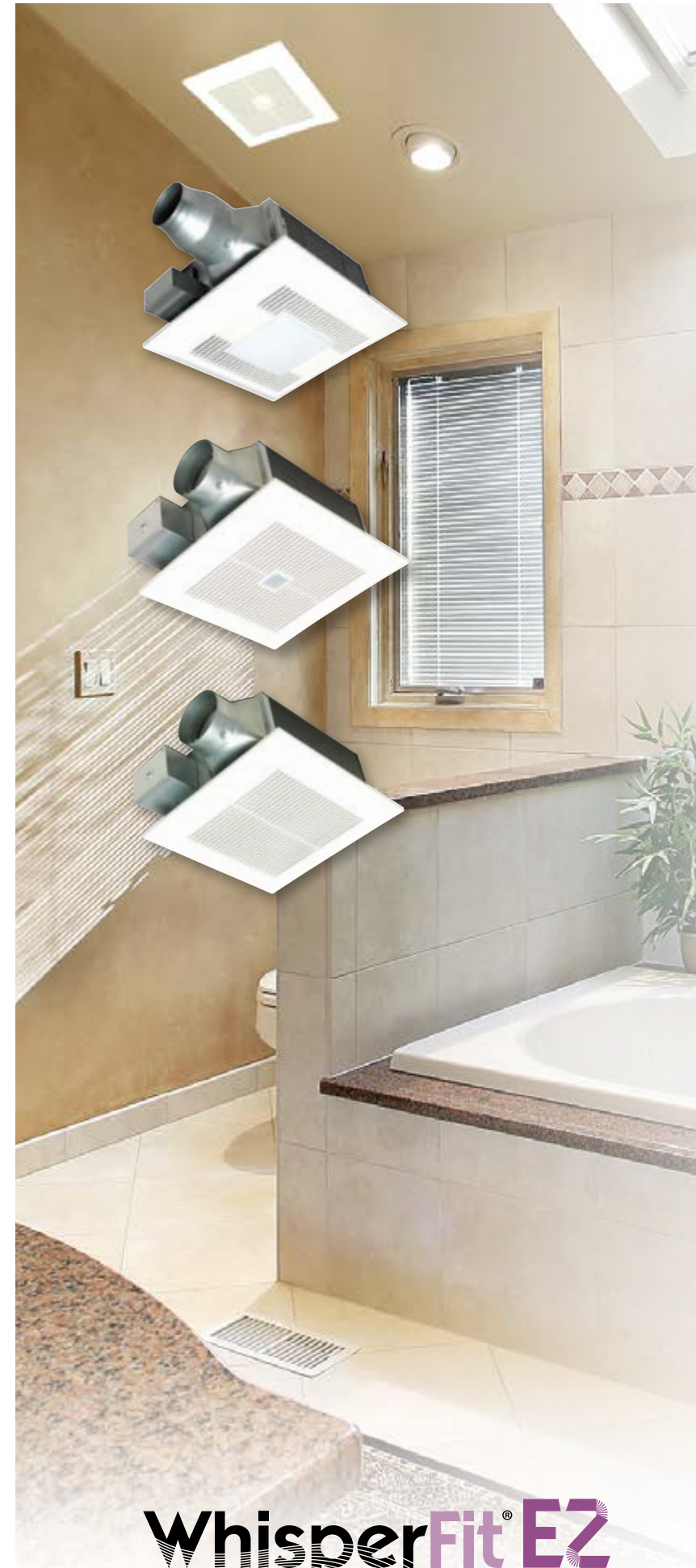
panasonic.com



As an ENERGY STAR[®] Partner, Panasonic has determined that this product meets the ENERGY STAR[®] Guidelines for energy efficiency.



WFEZ-08-2015 EN



WhisperFit[®] EZ

VENTILATION FAN

WhisperFit[®] EZ fans are ideal for residential remodelling, hotel new construction or renovation. One Fan, you choose the CFM. Our unique built-in Pick-A-Flow[™] speed selector allows you to choose the CFM (80 or 110).

- Flex-Z Fast[™] bracket provides flexible, fast and easy installation
- Includes 4" to 3" detachable duct adapter; provides greater flexibility
- Low profile housing design fits in 2 x 6 construction and perfect for remodelling projects and manufactured structured homes
- Lighted models feature a contemporary grille design with two 13W self-ballasted GU24 base CFLs and a convenient 4-Watt night-light
- Model FV-08-11VFM5 incorporates a SmartAction[®] Motion Sensor
- Remarkable performance and quiet operation at 0.25" w.g.

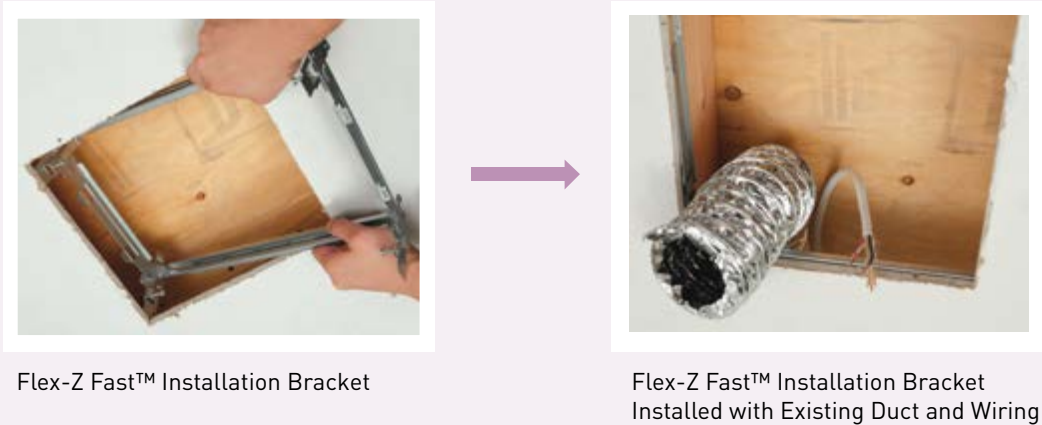
ADDITIONAL BENEFITS

- cUL listed for tub/shower enclosure when used with a GFCI protected circuit
- Fully enclosed condenser motor for long life
- Rated for 30,000 hours continuous run
- Can be used to comply with ASHRAE 62.2 and LEED
- 3-year warranty on parts, 1 year on CFL's

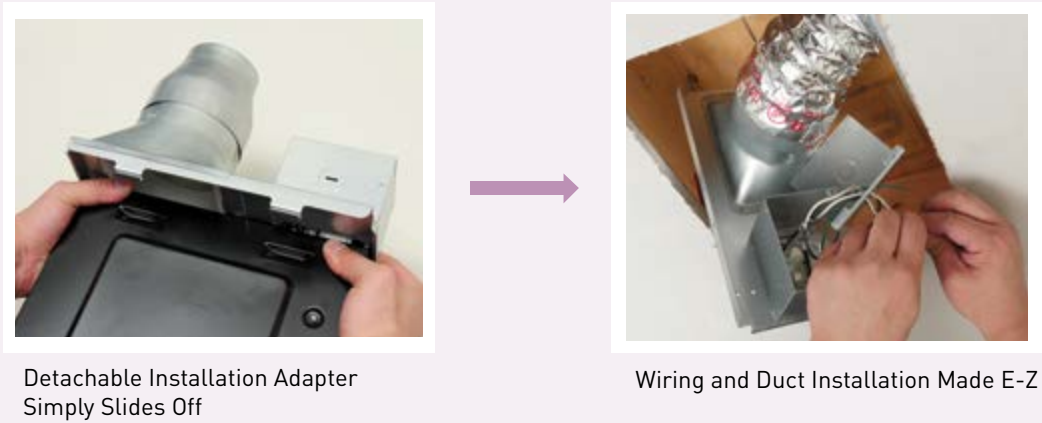
WhisperFit®EZ is the perfect solution for any remodeler looking to quickly and easily replace an existing fan from below the ceiling. This fan enables you to utilize existing duct, while its low profile housing design ensures a proper fit in virtually any ceiling. Installation is made simple with the Flex-Z Fast™ installation bracket with articulating joints for easy positioning through a ceiling cavity. The detachable installation adapter provides even greater flexibility when wiring and attaching the duct. Once installed, use the Pick-A-Flow™ speed selector to customize the air flow to meet your customers’ ventilation needs. All of these great features combined make WhisperFit®EZ the fastest, easiest, ENERGY STAR® retrofit fan available.

With WhisperFit®EZ, installation is as Easy as 1-2-3!

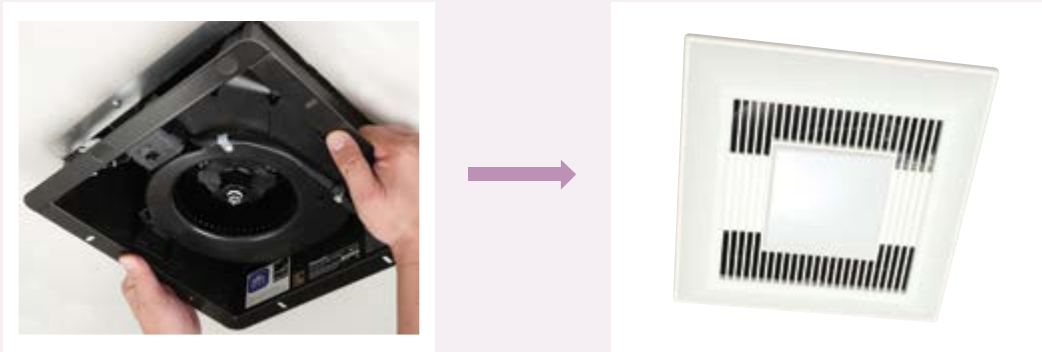
Step 1: Install Flex-Z Fast™ installation bracket with existing 3" duct and wiring.



Step 2: Detach installation adapter from the housing to connect wiring and attach duct.



Step 3: Fan is installed and ready to go!



Installed Performance and Quiet Operation at 0.25" w.g. Static Pressure

ASHRAE 62.2, ENERGY STAR®, LEED for Homes, and HVI have set the industry standard for performance measurement at 0.25" w.g. WhisperFit®EZ fans not only provide powerful CFM output at 0.25" w.g., but our sones have also been certified at 0.25" w.g., so they are quiet under pressure and after installation.

WhisperFit®EZ		FV-08-11VF5 (FAN)								FV-08-11VFM5 (FAN WITH MOTION SENSOR)								FV-08-11VFL5 (FAN/LIGHT)									
SPECIFICATIONS		4" Duct		3" Duct		4" Duct		3" Duct		4" Duct		3" Duct		4" Duct		3" Duct		4" Duct		3" Duct		4" Duct		3" Duct			
Characteristics (HVI tested data for 0.1" S.P.)	Static pressure in inches w. g.	0.1	0.25	0.1	0.25	0.1	0.25	0.1	0.25	0.1	0.25	0.1	0.25	0.1	0.25	0.1	0.25	0.1	0.25	0.1	0.25	0.1	0.25	0.1	0.25		
	Air Volume (CFM)	110	104	100	85	80	73	70	61	110	102	100	88	80	71	70	59	110	102	100	86	80	72	70	60		
	Noise (sones)	0.8	1.2	1.3	1.5	0.3	0.6	0.5	1.1	0.8	1.2	1.3	1.5	0.3	0.8	0.5	1.1	1.0	1.3	1.3	1.5	0.4	0.7	0.6	1.0		
	Power Consumption (watts)	26.5	26.4	26.4	25.9	21.1	20.7	20.9	20.3	27.0	26.8	26.8	26.3	21.6	21.1	21.4	20.8	26.6	26.5	26.4	25.8	20.9	20.5	20.8	20.2		
	Energy Efficiency (CFMs/watt)	4.2	4.0	3.9	3.5	3.8	3.5	3.5	3.2	4.1	3.8	3.8	3.3	3.7	3.3	3.5	3.0	4.2	3.9	3.9	3.4	3.8	3.5	3.7	3.2		
	Speed (RPM)	961	1179	1215	1369	848	1123	1005	1236	955	1174	1197	1352	847	1131	1008	1229	1033	1240	1270	1399	905	1164	1065	1263		
	Current (amps)	0.23	0.23	0.22	0.22	0.18	0.17	0.17	0.17	0.23	0.23	0.23	0.22	0.18	0.18	0.18	0.17	0.23	0.22	0.22	0.22	0.17	0.17	0.17	0.17		
	MAX. current (amps)	0.23				0.20				0.23				0.18				0.17				0.17					
	Power Rating (V/Hz)	120/60				120/60				120/60				120/60				120/60				120/60					
Specifications	Motor Type	AC				AC				AC				AC				AC				AC					
	Type of Motor Bearing	Ball				Ball				Ball				Ball				Ball				Ball					
	Thermal Fuse Protection	Yes				Yes				Yes				Yes				Yes				Yes					
	Blower Wheel Type	Sirocco				Sirocco				Sirocco				Sirocco				Sirocco				Sirocco					
	ENERGY STAR® Qualified	Yes				Yes				Yes				Yes				Yes				Yes					
Installation	Duct Diameter -inches (mm)	4 / 3 (102 / 76)								4 / 3 (102 / 76)								4 / 3 (102 / 76)									
	Mounting Opening -Square inches (mm)	10-1/2 (267)								10-1/2 (267)								10-1/2 (267)									
	Housing Dimensions (LxWxH)-inches (mm)	10-1/4 x 10-1/4 x 5-5/8 (260 x 260 x 143)								10-1/4 x 10-1/4 x 5-5/8 (260 x 260 x 143)								10-1/4 x 10-1/4 x 5-5/8 (260 x 260 x 143)									
	Grille Size -Square inches (mm)	13 (330)								13 (330)								13 (330)									
Light Specifications	Lamp Watts																							2 x 13W			
	998 lm per lamp*																										
	75 LPW*																										
	>80																										
	3500 K																										
	10,000																										
	MLS13GU35																										
	GU24																										
	Night-Light Specs																							Night Light Watts			
Shipping	Gross Weight - lbs	11.2				11.2				11.9				11.9				12.6				12.6					
Approved Code/Standard/Regulation	cUL tub/Shower Enclosure	Yes				Yes				Yes				Yes				Yes				Yes					
	Mfg in ISO 9001 Certified Facility	Yes				Yes				Yes				Yes				Yes				Yes					

*As tested by an EPA recognized lab NOTE: 0.25" w.g. = Installed Performance



Lighted Model

WhisperFit®EZ contemporary flush mount grille incorporates two 13W ENERGY STAR® rated self-ballasted GU24 base CFL lamps and a 4W night light. 3500 Kelvin >80 CRI/998 Lumens per lamp*/ 75 Lumens Per Watt/10,000 hours rated average life/equivalent to two 75W incandescent lamps.

*(2) 13W self-ballasted GU24 base CFL lamps included

