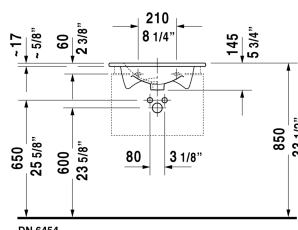
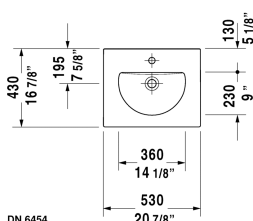


## Darling New Furniture washbasin # 0499530000

| < 20 7/8" Inch > |



Furniture washbasin	Dimension	Weight	Order number
with overflow, with faucet deck, hardware included, wall-mounted, cUPC listed, 20 7/8" Inch			
<b>Colors</b>			
00 White			
<b>Variant</b>			
●	20 7/8" x 16 7/8" Inch	24.3 lb	0499530000
<b>Infobox</b>			
For vanity units the space-saving siphon is recommended			
Sanitary ceramics with the special WonderGliss surface finish will remain clean and attractive-looking for a long time to come. When ordering WonderGliss please add a "1" as eleventh digit to the model number.			
Space-saving siphon	1 1/4" Inch	0.9 lb	005076
<b>Suitable products</b>			
Vanity unit wall-mounted 1 pull-out compartment, with siphon cut-out and apron, for Darling New # 049953, 19 5/8" x 16 7/8" Inch	19 5/8" x 16 7/8" Inch		DN6454
Vanity unit wall-mounted 2 drawers, upper drawer including cut-out for siphon and siphon cover, for Darling New # 049953, 19 5/8" x 16 3/4" Inch	19 5/8" x 16 3/4" Inch		DL6330
Vanity unit wall-mounted 1 pull-out compartment, compartment consists of glass dividers and 2 boxes (small/large), for Darling New # 049953 without compartment, 19 5/8" x 16 1/8" Inch	19 5/8" x 16 1/8" Inch		XL6060
Vanity unit wall-mounted 1 pull-out compartment, for Darling New # 049953, 20 1/2" x 16 1/2" Inch	20 1/2" x 16 1/2" Inch		LC6160
Vanity unit wall-mounted with 2 drawers, upper drawer including cut-out for siphon and siphon cover, for Darling New # 049953, 20 1/2" x 16 1/2" Inch	20 1/2" x 16 1/2" Inch		LC6260

## Darling New Furniture washbasin # 0499530000

| < 20 7/8" Inch > |

Vanity unit floorstanding 2 pull-out compartments, upper drawer including cut-out for siphon and siphon cover, for Darling New # 049953, 20 1/2" x 16 1/2" Inch	20 1/2" x 16 1/2" Inch	LC6604
Vanity unit floorstanding 2 pull-out compartments, plinth panel with integrated plinth leg (adjustable), for Darling New # 049953, 20 1/2" x 16 1/2" Inch	20 1/2" x 16 1/2" Inch	LC6616

*All drawings contain the necessary measurements which are subject to standard tolerances. They are stated in inch & mm and are non-binding. Exact measurements, in particular for customized installation scenarios, can only be taken from the finished ceramic piece.*