

INSTALLATION INSTRUCTIONS

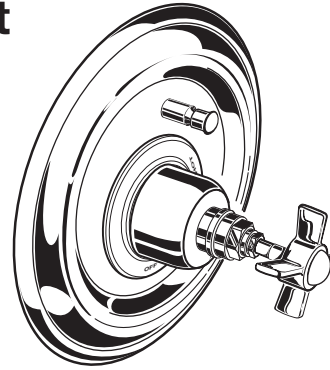
Landfair™ Pressure Balanced Tub/Shower Diverter Valve Trim Kit

Model D35107640

To be used with D35000600.191
Rough Valve for Pressure Balanced
Bath/Shower



AMERICAN STANDARD



*Thank you for selecting DXV by American Standard.
To ensure that your installation proceeds smoothly,
please read these instructions carefully
before you begin.*

RECOMMENDED TOOLS AND MATERIALS

Most of the procedures require the use of common tools and materials, which are available from hardware and plumbing, supply stores. It is essential that the tools and materials be on hand before work is begun.



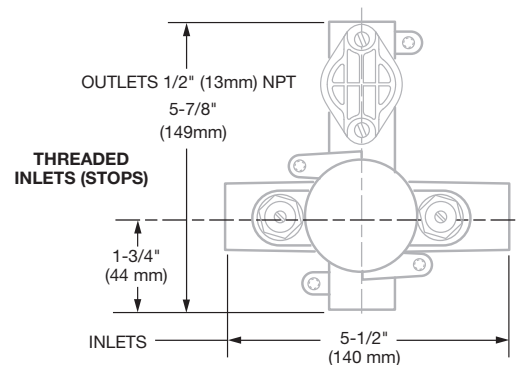
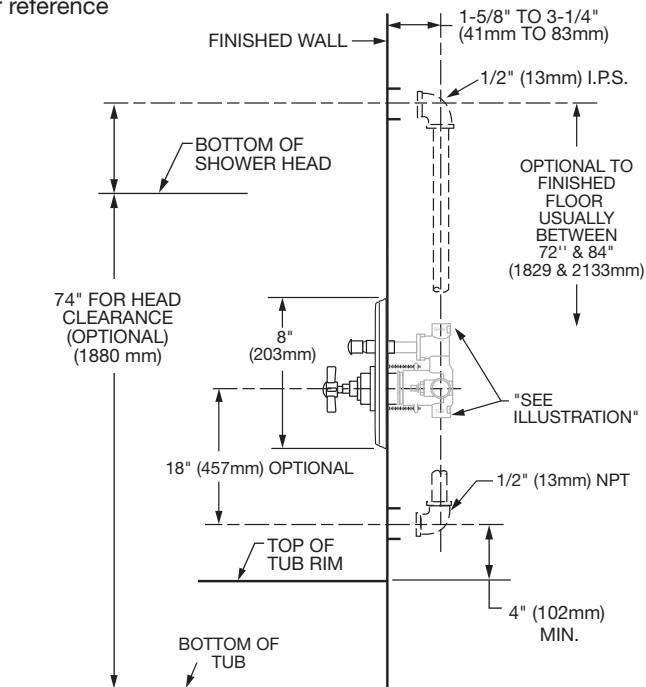
Phillips Screwdriver



Regular Screwdriver

ROUGHING-IN DIMENSIONS:

- For reference



In the United States:

DXV by American Standard
One Centennial Avenue
Piscataway, New Jersey 08855
Attention: Director of Customer Care

For residents of the United States, warranty
information may also be obtained by calling
the following toll free number: (800) 227-2734
www.DXV.com

In Canada:

DXV by American Standard
5900 Avebury Road
Mississauga, Ontario
L5R 3M3
Canada

Toll Free: 1-800-387-0369
Local: 905-306-1093
Fax: 1-800-395-1498
www.DXV.ca

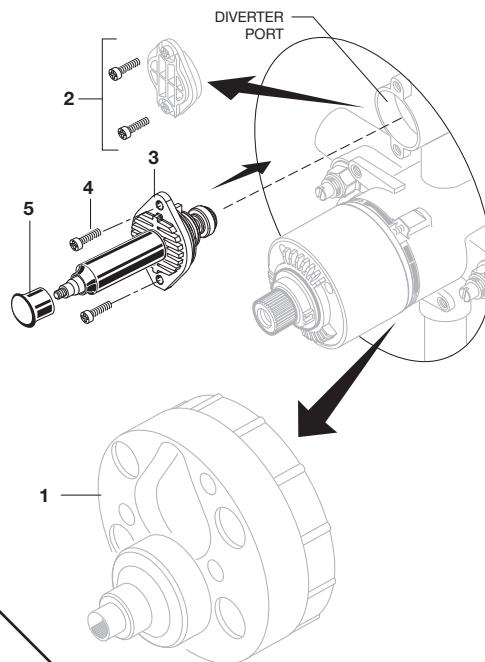
In Mexico:

DXV by American Standard
Via Morelos 330
Col. Santa Clara Coatlita
Ecatepec, Estado de México 55540

Toll Free: 01-800-8391200
www.DXV.mx

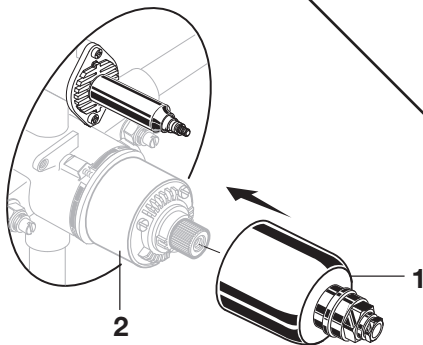
1 INSTALL DIVERTER **CAUTION** Turn off water at main supply.

- When finished tiling the wall, remove PLASTER GUARD (1). Remove two screws that secure the DIVERTER LID (2) and remove Lid. Inspect the inside surface of diverter port. Diverter port must be free of any dirt. Clean if necessary.
- Remove DIVERTER KNOB (5) from DIVERTER (3).
- Install DIVERTER (3) with SCREWS (4) removed from DIVERTER LID (2).
- Operate DIVERTER (3). DIVERTER (3) should slide in and out smoothly.



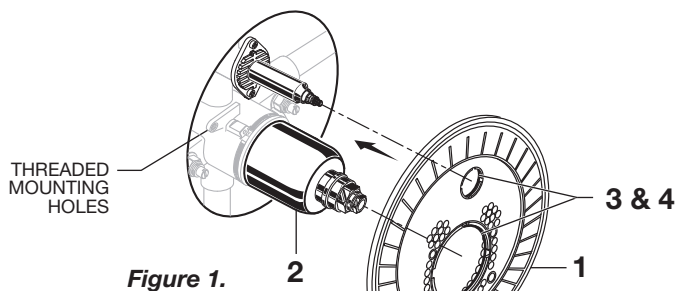
2 INSTALL VALVE COVER

- Push CAP (1) over VALVE CARTRIDGE (2) until seated against stop.

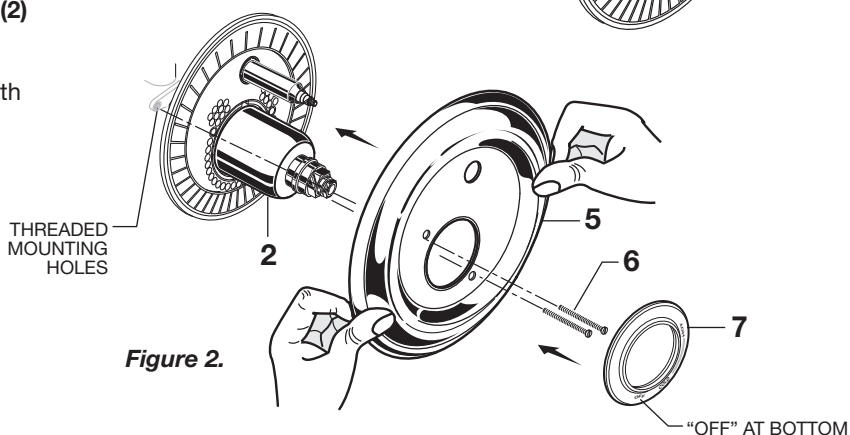


3 INSTALL TRIM

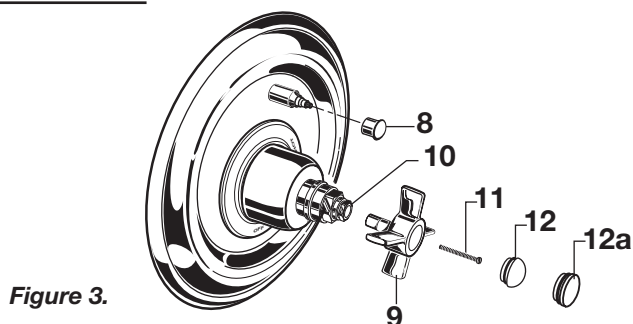
- **Figure 1.** Push ESCUTCHEON HOLDER (1) onto CAP (2). Make sure O-rings (3 & 4) are in place.



- **Figure 2.** Install ESCUTCHEON (5) onto CAP (2) and push flush against finished wall.
- Align mounting holes in ESCUTCHEON (5) with with threaded mounting holes in valve body.
- Secure ESCUTCHEON (5) with SCREWS (6).
- Push DIAL PLATE (7) onto CAP (2).



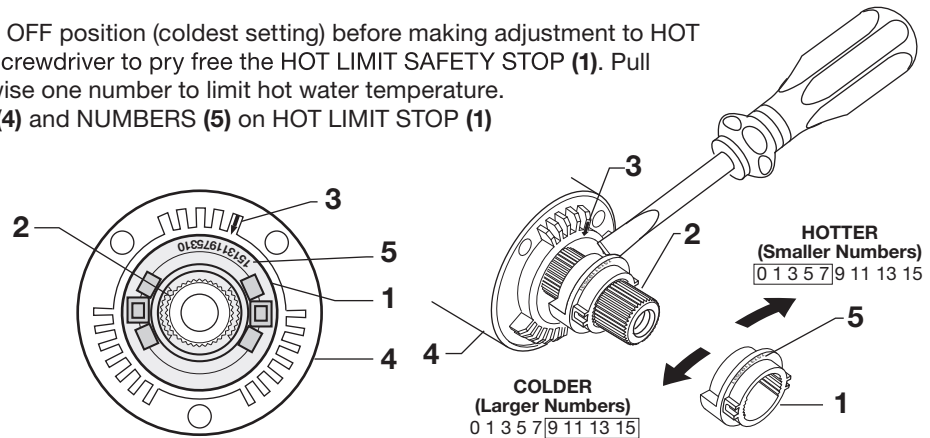
- **Figure 3.** Thread DIVERTER KNOB (8) onto diverter stem.
- Install CROSS HANDLE (9) into VALVE STEM (10) and secure with SCREW (11).
- Push INDEX BUTTON (12, 12a) into HANDLE (9).



4 ADJUST HOT LIMIT STOP (MUST BE DONE WITH TRIM REMOVED)

By restricting **HANDLE** rotation and limiting the amount of hot water allowed to mix with the cold, the **HOT LIMIT SAFETY STOP (1)** reduces risk of accidental scalding. To set the maximum hot water temperature of your faucet, all you need to do is adjust the setting on the **HOT LIMIT SAFETY STOP (1)**.

- Turn **CARTRIDGE STEM (2)** to the OFF position (coldest setting) before making adjustment to **HOT LIMIT STOP (1)**. Use a flat blade screwdriver to pry free the **HOT LIMIT SAFETY STOP (1)**. Pull forward and rotate counterclockwise one number to limit hot water temperature. Use **ARROW (3)** on **CARTRIDGE (4)** and **NUMBERS (5)** on **HOT LIMIT STOP (1)** for indication.



5 BACK TO BACK INSTALLATION (SEE ILLUSTRATION STEP 7 FOR REFERENCE)

- Remove Handle and Trim from Valve. See step 3 for reference.
- Remove **PRESSURE BALANCE UNIT (5)**. Rotate **PRESSURE BALANCE UNIT (5)** 180° so that the inlets face up and the large outlet port faces down.
- Push **PRESSURE BALANCE UNIT (5)** in casting make sure inlets line up with holes in bottom of casting. Top flange should butt up against top of casting.
- Reassemble **FIXATION RING (4)** and **CARTRIDGE (1)**.

6 TEST INSTALLED FAUCET

- Turn **VALVE "off"**.
- With **HANDLE** in "off" position, turn on water supplies and check all connections for leaks.
- Operate **HANDLE** and flush water lines thoroughly. Pull **DIVERTER** and check **SHOWER** for proper operation.
- Check **SPOUT** and **SHOWER** connections for leaks.

7 TO GAIN ACCESS TO VALVE FOR SERVICING

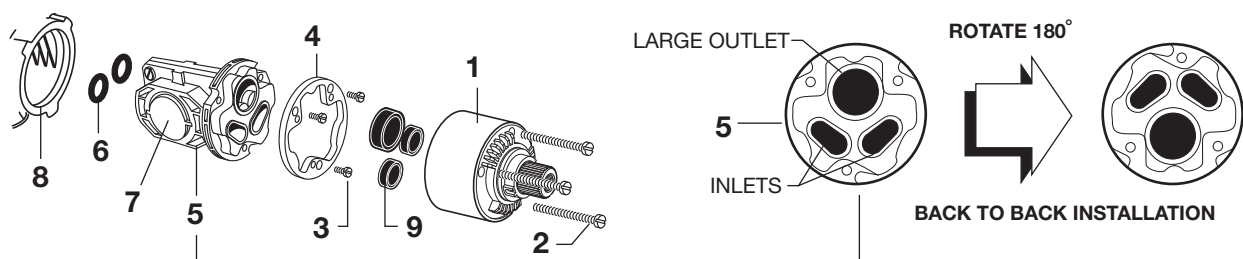
- Remove Handle and Trim from Valve. See step 3 for reference.
- Shut off water supply by either closing off main water supply, or closing off the hot and cold **CHECK STOPS** on valve, if present.

VALVE LEAKS WHEN SHUT OFF

- Remove **CARTRIDGE (1)** by removing **CARTRIDGE SCREWS (2)**. Remove three **SCREWS (3)** from **FIXATION RING (4)** and pull out **PRESSURE BALANCING (5)** unit.
- Clean **SEALS (9)** on base of **CARTRIDGE (1)**. Check base of **PRESSURE BALANCING UNIT (5)** and clean **O-RINGS (6)**. Remove **CAPS (7)** and check **O-RINGS** on inside of **CAPS (7)**. Clean inside sealing surfaces of **VALVE BODY (8)**.
- Re-assemble **PRESSURE BALANCING UNIT (5)** and **CARTRIDGE (1)**. Tighten all screws. Turn on water supply and see above for installing **TRIM** and **HANDLE**.

UNABLE TO MAINTAIN CONSTANT TEMPERATURE

- Remove **PRESSURE BALANCE UNIT (5)**. Remove **CAPS (7)** and clean valve thoroughly.
- Examine balancing unit and check condition of O-ring on end of piston. Piston should move back and forth. Order Repair Part M952100-0070 if balancing unit is defective.
- Replace **CAPS (7)** and install **PRESSURE BALANCE UNIT (5)**. Make sure inlets line up with two holes in bottom of casting. Top flange should butt-up against top of casting.





AMERICAN STANDARD

Landfair™ Pressure Balanced Tub/Shower Valve Trim Kit

MODEL NUMBERS

D35107640

Replace the "XXX" or "YYY" with appropriate finish code

POLISHED CHROME	100
CARBON BRONZE	110
PLATINUM NICKEL	150

