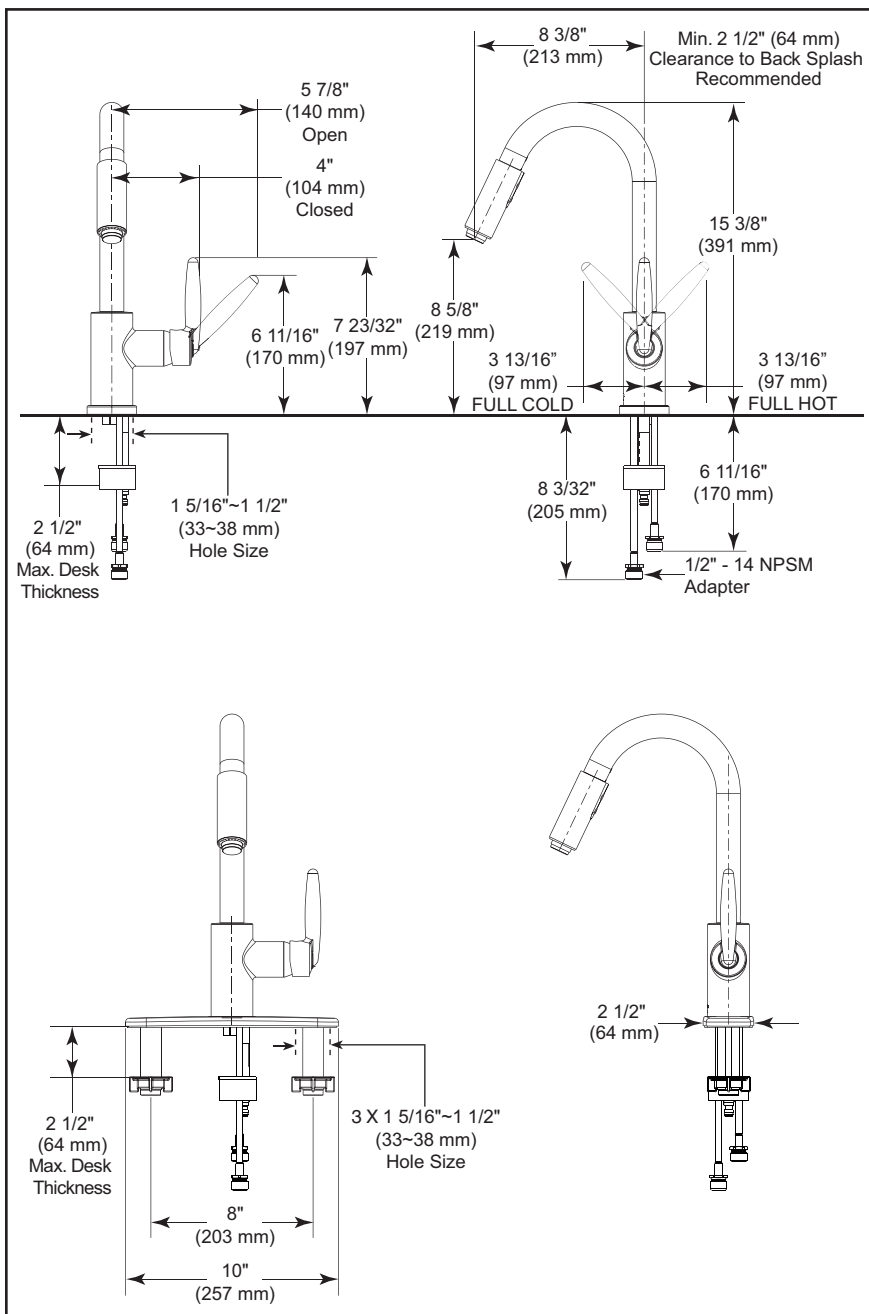


Submitted Model No.: _____

Specific Features: _____



▲ Designate proper finish suffix

Delta reserves the right (1) to make changes in specifications and materials, and (2) to change or discontinue models, both without notice or obligation. Dimensions are for reference only. See current full-line price book or www.specselect.com for finish options and product availability.

DSP-K-985LF Rev. C



KITCHEN FAUCETS

- Grail® Pulldown Kitchen Faucet
- Single Handle Deck Mount

STANDARD SPECIFICATIONS:

- Solid brass fabricated body.
- Single handle kitchen faucet for exposed mounting on 1 or 3 hole sinks.
- 8" centres with optional 10" long escutcheon (RP48358).
- 15 3/8" (391 mm) high, 8 3/8" (212 mm) long spout nestled in a metal hub, swings 360°.
- Pull-down spout operates in an aerated or spray mode via an easy push button.
- Touch-Clean® sprayhead.
- Quick Snap® hose installation.
- Colour coded plug button on handle for hot/cold identification.
- Spout is connected to valve body with a 59" (1499 mm) long hose that extends to 23" (584 mm) usable length.
- Ceramic cartridge.
- 3/8" O.D. straight, staggered copper supply tubes 6 11/16" (170 mm) and 8 3/32" (205 mm) long.
- Standard with 1/2"-14 NPSM adapters.
- Integral double check valves in spray head.
- Maximum flow rate 1.8 gpm @ 60 PSI.

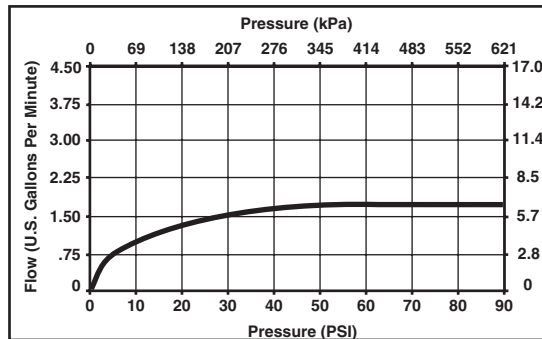
WARRANTY

- Lifetime Faucet and Finish Limited Warranty to the original consumer purchaser to be free from defects in material and workmanship.
- 5 Year Limited Warranty for usage in all industrial, commercial and business applications.



COMPLIES WITH:

- Complies to ASME A12.18.1 / CSA B125.1
- ♿ Indicates compliance to ICC/ANSI A117.1
- Verified compliant with 0.25% weighted average Pb content regulations.



55 E. 111th Street, Indianapolis, Indiana 46280
350 South Edgeware Road, St. Thomas, ON N5P 4L1
© 2014 Masco Corporation of Indiana