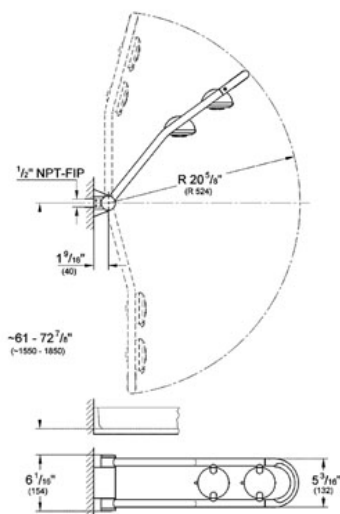


FREEHANDER® Shower System with Concealed Fitting

MODEL # 27007

GROHE CANADA, INC. | 5900 Avebury Road, Mississauga, Ontario, Canada L5R 3M3
Phone: 905-271-2929 | Fax: 905-271-9494 | info@grohe.ca

Pure Freude
an Wasser



Product Description: Shower System with Concealed Fitting

Standard Specification:

- 18 Shower Spray Combinations - 9 "Up" (shower head position) / 9 "Down" (body spray position)
- 180° Pivoting Arm adjusts for shower head or body spray function
- 360° Manual Shower Head Rotation
- Outer Head – Wide Spray/Pulsator (Massage)/Eco (reduces flow)
- Inner Head – Wide Spray/Pulsator (Massage)/Stop
- Lockable
- Speedclean® Anti-Lime System
- Self stopping joint
- **GROHE StarLight®** finish
- Easy installation or retrofit

Applicable Codes & Standards:

- Energy Policy Act of 1992
- ASME A112.18.1/CSA B125.1

Color:

□ 27007 000 chrome

