

American Standard



BARRIER FREE

CADET® 3 RIGHT HEIGHT™ ELONGATED TOILET with the FLUSH RIGHT™ SYSTEM

VITREOUS CHINA

CADET® 3 RIGHT HEIGHT™ ELONGATED TOILET with the FLUSH RIGHT™ SYSTEM

2386 012

- Vitreous china
- Low-consumption (6.0 Lpf/1.3 gpf)
- EverClean™ silver-based ceramic glazed
- Featuring the **Flush Right™ System**
- 16-1/2" (419mm) rim height for accessible application
- Elongated siphon action jetted bowl
- Fully-glazed 2-1/8" (54mm) trapway with 2" (51mm) ball pass
- Generous 9" x 8" (229x203mm) water surface area
- Close-coupled tank with flat tank cover for superior storage
- Oversized 3" (76mm) flush valve with chemical resistant flapper
- Chrome trip lever
- New Speed Connect™ tank/bowl coupling system
- New sanitary dam on bowl with four point tank stabilization
- 2 colour-matched bolt caps
- 100% factory flush tested

Separate Component Parts:

3016 016 Right Height™ Elongated Bowl

4021 016 Unlined Tank

Nominal Dimensions:

768 x 438 x 768mm

(30-1/4" x 17-1/4" x 30-1/4")

Fixture only, seat and supply by others

Alternative Tank Configurations Available:

- ❑ 4021 500 Lined Tank w/Aquaguard Liner
- ❑ 4021 600 Unlined Tank w/Bolted Cover
- ❑ 4021 700 Lined Tank w/Aquaguard Liner and Bolted Cover
- ❑ 4021 800 Unlined Tank w/Right Hand Trip Lever
- ❑ 4021 900 Unlined Tank w/Bolted Cover and Right Hand Trip Lever

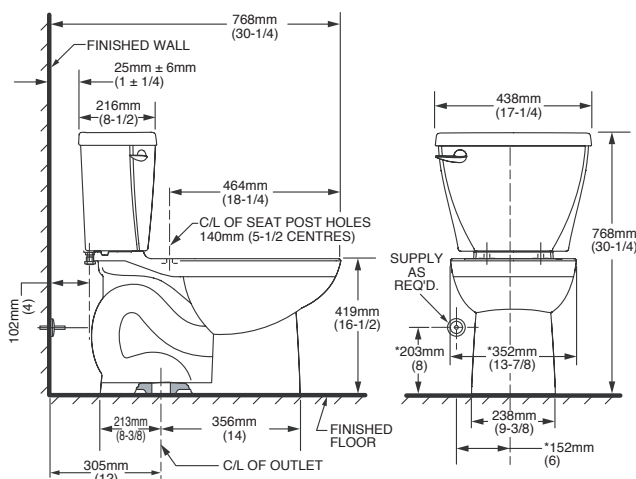
Compliance Certifications -

Meets or Exceeds the Following Specifications:

- ASME A112.19.2M (and 19.6M)
- CAN/CSA B45 series

To Be Specified

- ❑ Colour:
- ❑ Champion® Slow Close Seat EL: #5325 010
- ❑ Seat: American Standard #5324 019 "Rise and Shine" (with easy to clean lift-off hinge system) solid plastic, closed front, elongated seat with cover. See Price Book.
- ❑ Supply with stop:



NOTES:

THIS TOILET IS DESIGNED TO ROUGH-IN AT A MINIMUM DIMENSION OF 305MM (12") FROM FINISHED WALL TO C/L OF OUTLET.

SUPPLY NOT INCLUDED WITH FIXTURE AND MUST BE ORDERED SEPARATELY.

* DIMENSION SHOWN FOR LOCATION OF SUPPLY IS SUGGESTED.

FOR ADDITIONAL INFORMATION REFER TO INSTALLATION INSTRUCTIONS SUPPLIED.

IMPORTANT: Dimensions of fixtures are nominal and may vary within the range of tolerance established by ANSI Standard A112.19.2

These measurements are subject to change or cancellation. No responsibility is assumed for use of superseded or voided pages.



- When installed so top of seat is 432 to 483mm (17" to 19") from the finished floor.

MEETS THE AMERICAN DISABILITIES ACT GUIDELINES AND ANSI A117.1 REQUIREMENTS FOR ACCESSIBLE AND USEABLE BUILDING FACILITIES-CHECK LOCAL CODES.



Cadet® 3 Toilet
featuring the Flush Right™ system