

6034 ED L/R



MODEL	A	B	C	D	E	F	Door Opening	Cap Optional
6034ED L/R	60	34 ³ / ₄	79	19	6 ¹ / ₂	9 ¹ / ₄	57 ¹ / ₂	No
<i>Shodor 350/650/950/791 - 57¹/₂ x 71</i>								

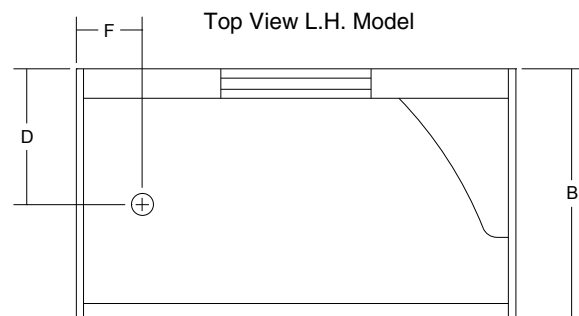
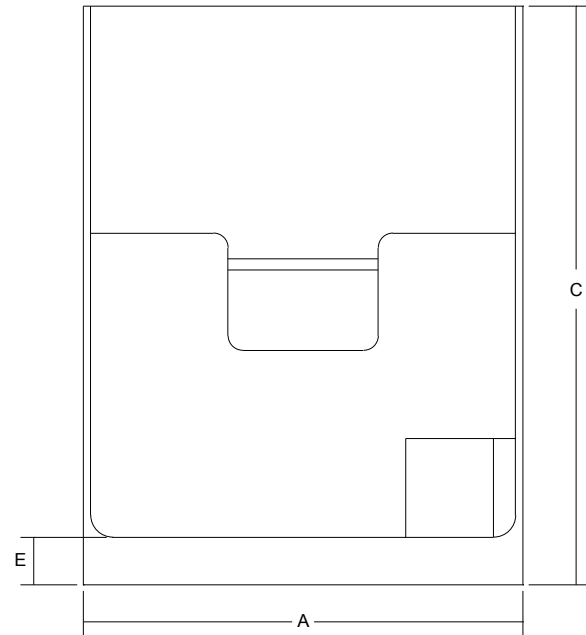
Specifications

The shower unit shall be a gel-coated, heavy-duty fiberglass reinforced unit to provide a sanitary, unbroken, smooth surface.

Reinforcing and contouring gives added strength. The units shall have one inch nailing flanges on front and top edges and warranted against factory defects for three years.

All product measurements are to the outside of nailing flange. Measurements plus (+) or minus (-) 1/4".

All Venco Products are Canadian Standards Association certified



7584 Vantage Place, Delta, BC V4G 1A5
 Phone (604) 940-4960 • Fax (604) 940-9733
 email: venco@telus.net
 www.venco.ca