

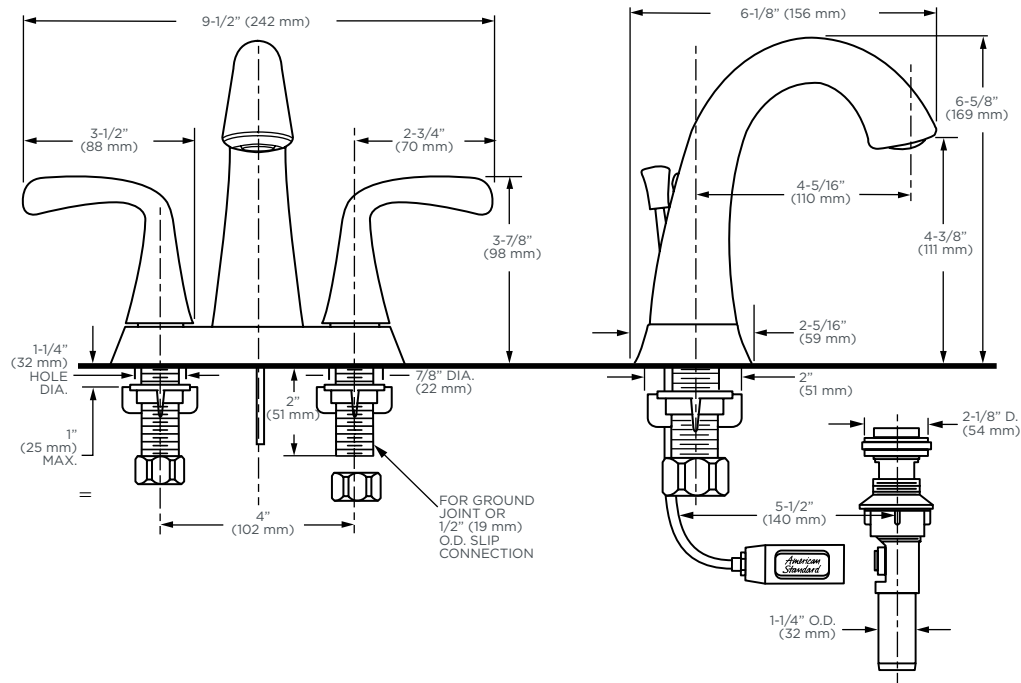
MODEL NUMBER:

- 7186 201 Fluent 2-Handle Centerset
- Metal Speed Connect® Popup drain.
- Metal Lever Handles.



7186 201 Shown

*WaterSense® approval pending



GENERAL DESCRIPTION:

Durable cast brass spout. 1/4 turn washerless ceramic disc valve cartridges. Metal lever handles. One-half inch brass male inlet shanks with brass supply nuts. 20 inch (500mm) long flexible stainless steel drain cable is pre-assembled to faucet body. Metal Speed Connect® drain body with 1-1/4 inch (32mm) tail piece (7186 201) 1.25 gpm/5.7L/min. maximum flow rate.

PRODUCT FEATURES:

Brass Spout & Waterway: Durable - Easy to clean. Ideal for prolonged contact with water.

Ceramic Disc Valve Cartridges: Assures a lifetime of smooth handle operation and drip-free performance.

Lead Free: Faucet contains ≤ 0.25% total lead content by weighted average.

Exclusive Speed Connect Metal Drain:

- Fewer parts. Installs in less time.
- No adjustments required seals the first time, every time.
- Flexible stainless steel cable installs effortlessly in tight spaces.

Choice of Finishes: Wide range of durable finishes.

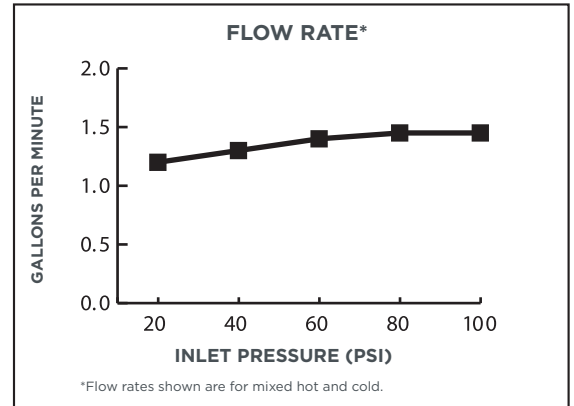
SUGGESTED SPECIFICATION:


4" (102 mm) centerset lavatory faucet shall feature cast brass spout. Shall also feature 1/4 turn washerless ceramic disc valve cartridges. Shall also feature a metal drain body with stainless steel cable actuation. Fitting shall be American Standard Model # 7186 ____.


CODES AND STANDARDS

These products meet or exceed the following codes and standards:

- ASME A112.18.1
- CSA B 125
- NSF 61/Section 9 and Annex G



Product Number	Description		Finish Options		
			Polished Chrome	Oil Rubbed Bronze	Satin Nickel (PVD)
			002	224	295
7186 201	Fluent™ 2-handle centerset with Metal Speed Connect® pop-up drain. Metal lever handles.				

 Meets the American Disabilities Act Guidelines and ANSI A117.1 Requirements for the physically challenged.