

American Standard

Installation Instructions 4433.300

QUINCE™

SINGLE CONTROL KITCHEN PULL-DOWN FAUCET

*Thank you for selecting American-Standard...
the benchmark of fine quality for over 100 years.*

*To ensure that your installation proceeds smoothly—
please read these instructions carefully before you begin.*



Certified to comply with ANSI A112.18.1M
M965244 REV. 1.3

RECOMMENDED TOOLS



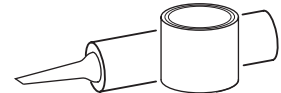
Regular Screwdriver



Phillips Screwdriver



Adjustable Wrench



Plumbers' Putty or Caulking

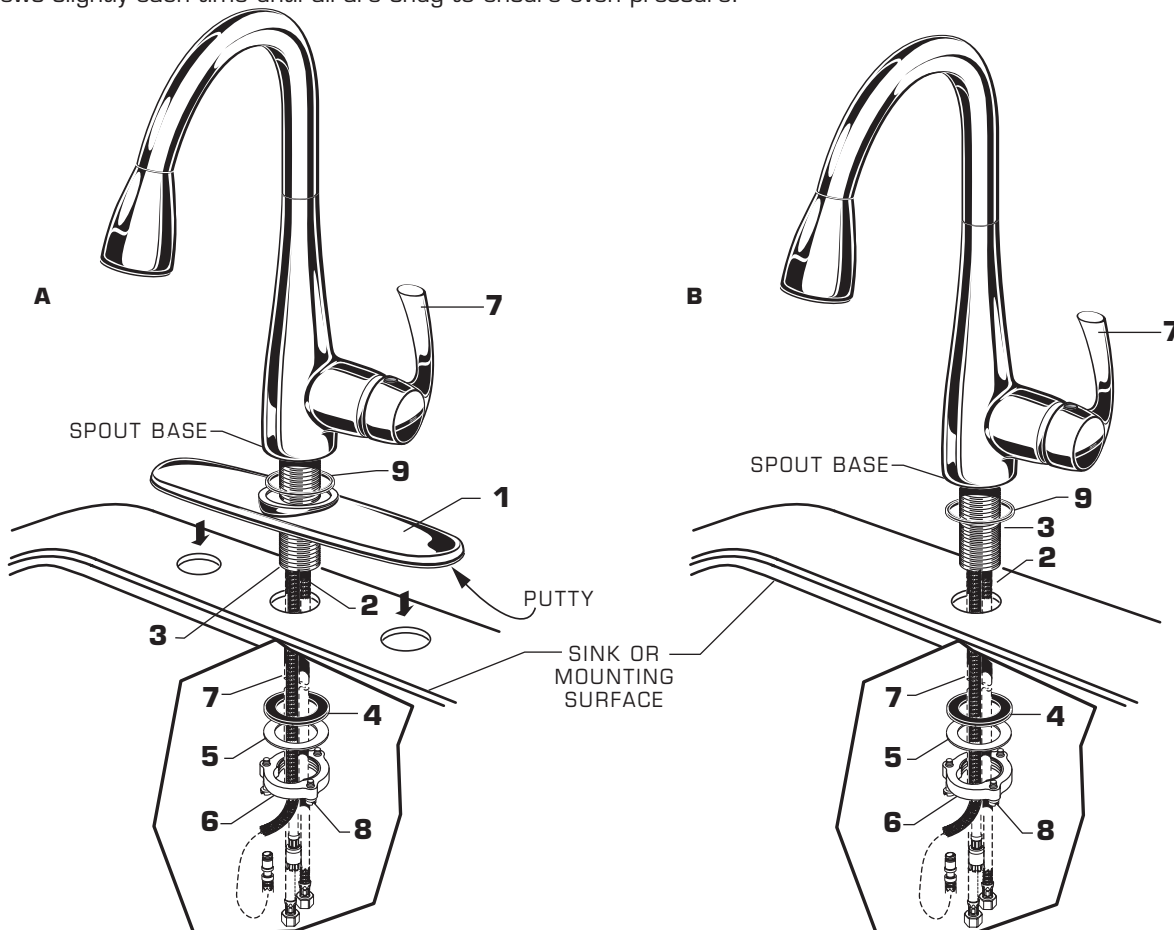
1

INSTALL FAUCET WITH OR WITHOUT DECK ESCUTCHEON

CAUTION

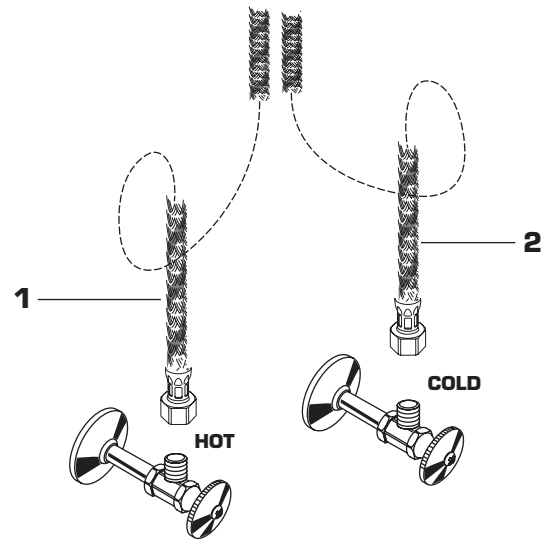
Turn off water at
main supply.

- **(A) Installation with ESCUTCHEON (1).** Apply a bead of putty to bottom edge of ESCUTCHEON with PUTTY PLATE (1). Make certain the SEAL (9) is properly seated in recess of faucet body. Insert SUPPLY HOSES (2), SPRAY HOSE (7) and SHANK (3) through hole of ESCUTCHEON with PUTTY PLATE (1) and mounting surface. Follow mounting instructions below to secure faucet to mounting surface.
- **(B) Installation less ESCUTCHEON (1).** Discard ESCUTCHEON with PUTTY PLATE (1). Make certain the SEAL (9) is properly seated in recess of faucet body. Insert supply HOSES (2), SPRAY HOSE (7) and SHANK (3) through mounting hole and seat SPOUT BASE onto sink or mounting surface. **Do not use putty.**
- Insert HOSES (2) through RUBBER WASHER (4), BRASS WASHER (5), and threaded LOCKNUT (6).
- Assemble RUBBER WASHER (4), BRASS WASHER (5), and threaded LOCKNUT (6) onto SHANK (3) from underside of sink or mounting surface. Hand tighten LOCKNUT (6).
- Use a screwdriver to tighten SCREWS (8) on LOCKNUT (6). Work your way around LOCKNUT (6), tightening the screws slightly each time until all are snug to ensure even pressure.



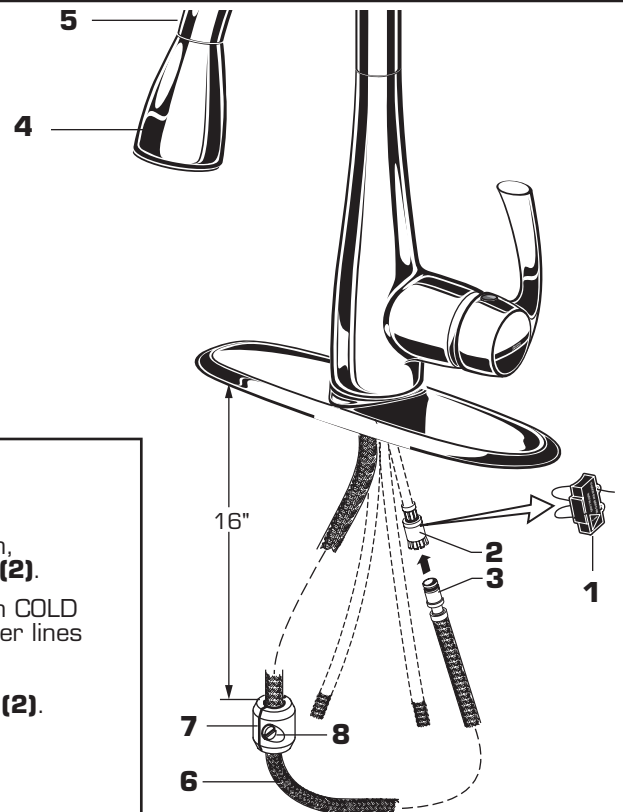
2 MAKE WATER SUPPLY CONNECTIONS

- Turn off hot and cold water supplies before beginning.
- Connect FLEXIBLE SUPPLIES (1, 2) directly to wall supplies. Connection on fitting supplies are 3/8" compression. Connect left supply (Marked with a Red Stripe) to Hot and right supply (Marked with Blue Stripe) to Cold wall supply. Use adjustable wrench to tighten connections. Do not over tighten.
- Faucet supplies are 21" long from faucet base.
- **Note:** If additional supply length is required, installer must purchase additional parts separately.
- **Important:** If SUPPLY HOSES (1, 2) are too long, loop as illustrated to avoid kinking.



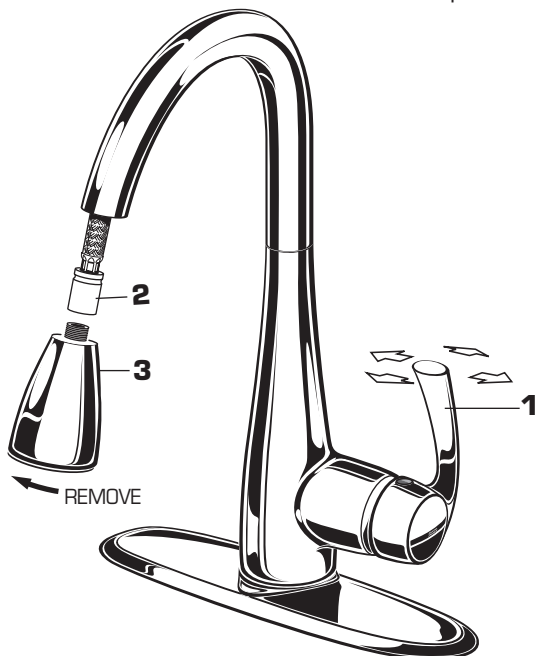
3 CONNECT SPRAY HOSE & INSTALL WEIGHTS

- Remove the FAUCET PROTECTION DEVICE (1) from the HOSE CONNECTOR (2).
- Push the SPRAY HOSE END (3) into the HOSE CONNECTOR (2) until it snaps into place.
- With HAND SPRAY (4) seated in SPOUT (5), install two sets of WEIGHTS (7) onto HOSE (6) using two SCREWS (8). Locate the WEIGHTS (7) 16 inches from the underside of the sink deck. Tighten SCREWS (8) firmly.



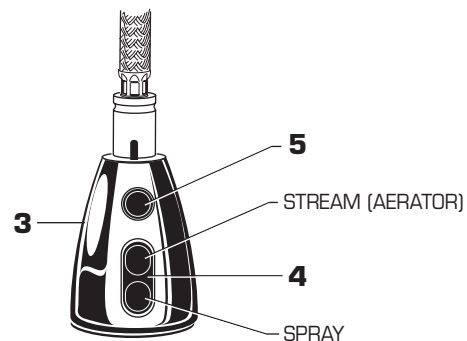
4 TEST INSTALLED FAUCET

- Move HANDLE (1) into "off" position.
- Turn on water supplies.
- Check connections for leaks. (See Section 5)
- With HANDLE (1) in "off" position, unthread SPRAY (3) from HOSE (2).
- Operate handle back to front, in COLD and HOT positions, to flush water lines thoroughly.
- Replace SPRAY (3) onto HOSE (2).



SPRAY OPERATION

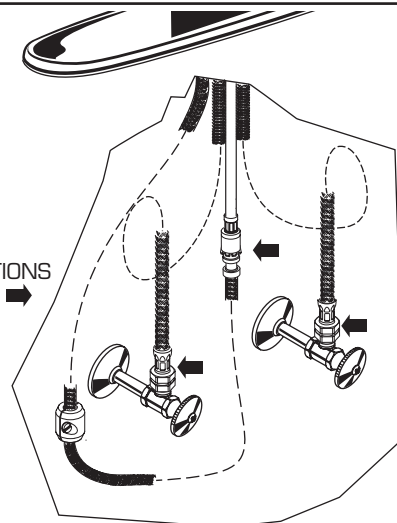
- With FAUCET on press TOGGLE BUTTON (4) on SPRAY (3) to switch from stream to spray.
- Press and hold PAUSE BUTTON (5) to temporarily stop flow from SPRAY (3). Release PAUSE BUTTON (5) to resume flow from SPRAY (3).



5 CHECK CONNECTIONS FOR LEAKS.

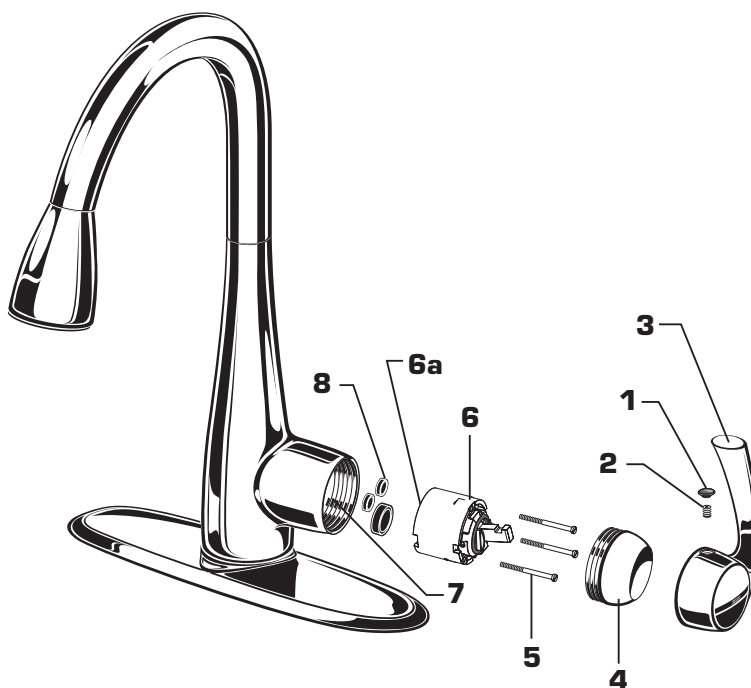
- Move **HANDLE** into "off" position.
- Turn on water supplies and check connections for leaks. ➡
- Operate **HANDLE (2)** up and down, left and right to flush water lines thoroughly.
- Operate **HAND SPRAY** and check connections for leaks. ➡

CHECK CONNECTIONS
FOR LEAKS ➡



6 SERVICE

- If faucet drips, operate **HANDLE** several times from "off" to "on." Do not apply excessive force.
- **Clogged CARTRIDGE outlets or inlets may cause reduced flow.**
To clean, first turn off water supply then:
 - Remove **INDEX BUTTON (1)**, loosen **HANDLE SCREW (2)** and remove **HANDLE (3)**.
 - Unthread the **ESCUTCHEON CAP (4)**. Unthread three **MOUNTING SCREWS (5)**.
 - Lift **CARTRIDGE (6)** off **MANIFOLD (7)** and remove **CARTRIDGE SEALS (8)**.
 - Clean **MANIFOLD (7)**, **CARTRIDGE (6)** ports and **SEALS (8)**.
 - Place **SEALS (8)** into **CARTRIDGE PORTS (6a)**.
 - Place **CARTRIDGE (6)** onto **MANIFOLD (7)** and tighten **MOUNTING SCREWS (5)** alternately.
 - Replace **ESCUTCHEON CAP (4)**, **HANDLE (3)**, tighten **HANDLE SCREW (2)** and install **INDEX BUTTON (1)**.



7 CARE:

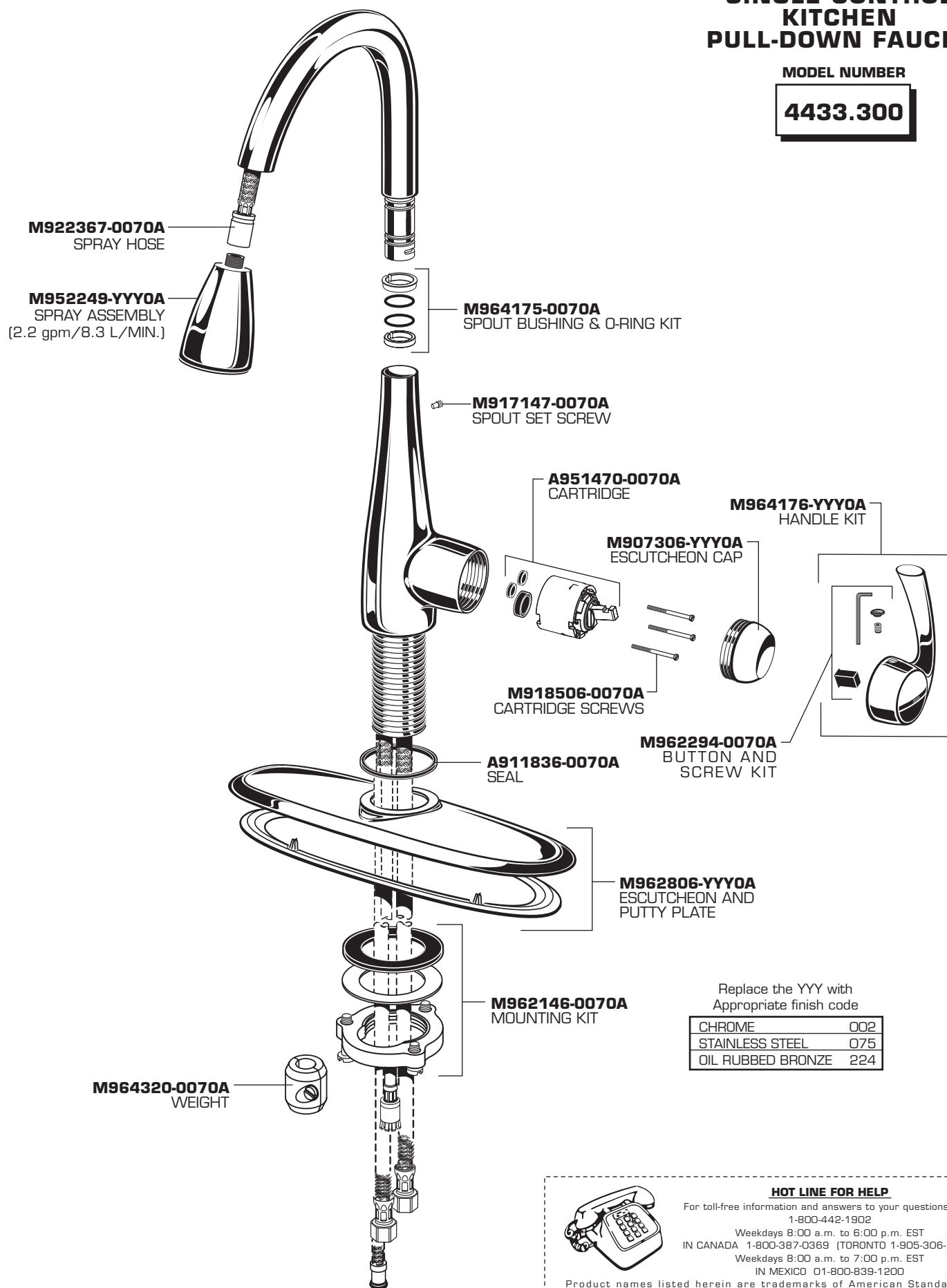
DO: SIMPLY RINSE THE PRODUCT CLEAN WITH CLEAR WATER. DRY WITH A SOFT COTTON FLANNEL CLOTH.
DO NOT: DO NOT CLEAN THE PRODUCT WITH SOAPS, ACID, POLISH, ABRASIVES, HARSH CLEANERS, OR A CLOTH WITH A COARSE SURFACE.

American Standard

QUINCE™
SINGLE CONTROL
KITCHEN
PULL-DOWN FAUCET

MODEL NUMBER

4433.300



Replace the YYY with
Appropriate finish code

CHROME	002
STAINLESS STEEL	075
OIL RUBBED BRONZE	224

HOT LINE FOR HELP

For toll-free information and answers to your questions, call:

1-800-442-1902

Weekdays 9:00 a.m. to 6:00 p.m. EST

IN CANADA 1-800-387-0369 (TORONTO 1-905-306-1093)

Weekdays 8:00 a.m. to 7:00 p.m. EST

IN MEXICO 01-800-839-1200

Product names listed herein are trademarks of American Standard Inc.
 © AS America, Inc. 2012